

HCH 43 00

INTERNAL MANUAL ROLLER BLINDS



The Helioscreen **HCH 43 00** internal manual system is the ideal solution for small to medium windows in both domestic and commercial applications. Effortlessly installed into recesses and pelmets, or stand alone, it provides a streamlined aesthetic look in any interior.

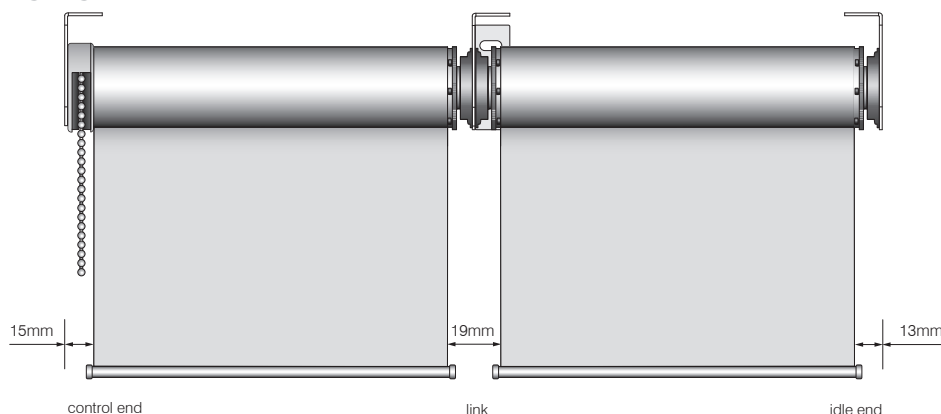
The **HCH 43 00** offers a multitude of linking solutions coupled with the option for dual shading requirements, making it one of Helioscreen's most versatile roller blind systems.



SYSTEM SPECIFICATIONS

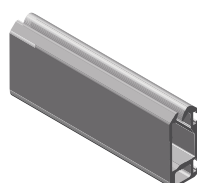
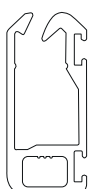
Minimum width	600mm
Maximum width	2800mm
Maximum drop	3200mm
Linkable	Yes, 2 medium or 3 small blinds
Dual brackets	Yes
Gear ratio	1 : 1
Minimum recess dimensions: (for single blinds)	Width 80mm / Height 85mm
Light gaps: (see diagram)	Control side 15mm Idle end side 13mm Between linked blinds 19mm

Light gaps



TECHNICAL INFORMATION: BASEBARS

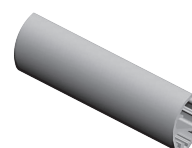
Size	The Force – Silent 31x13mm, Premium 33x13mm Oval 26x15mm, Round 22mm
Standard colours	Anodised, White, Shoji White, Barrister White, Barley, Dune, Black
Options	Custom powder coating available



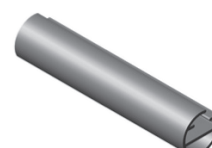
The Force – Silent
31x13mm



Premium
33x13mm



Oval
26x15mm



Round
22mm

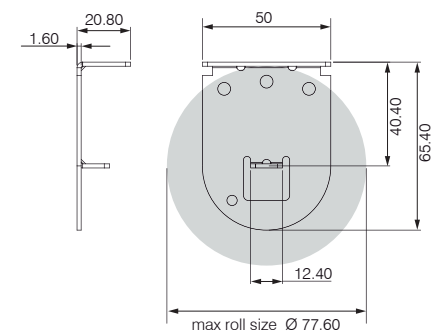
TECHNICAL INFORMATION: BRACKETS

Size	50 x 21mm fixing plate 66mm projection
Standard colours	White, Black, Grey
Options	Dual blind brackets available

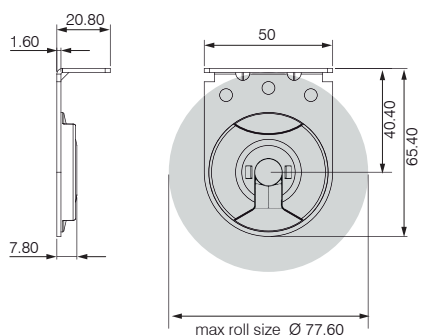
TECHNICAL INFORMATION: ROLLER TUBE

Roller tube	43mm extruded aluminium 1.1mm wall thickness Heavy duty tube option: 48mm
Gear	UVS Acetal and Nylon 6 Spring lock friction system Stainless steel or plastic chain
Idler	Nylon 6 Spring loaded and extendable idle pin

Single brackets

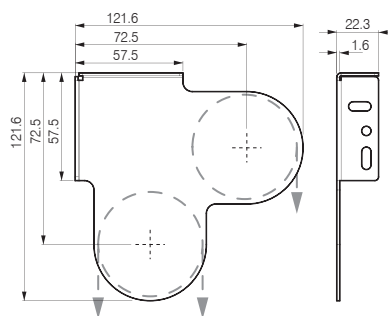


Control side

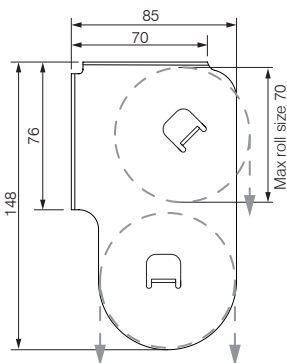


Idle side

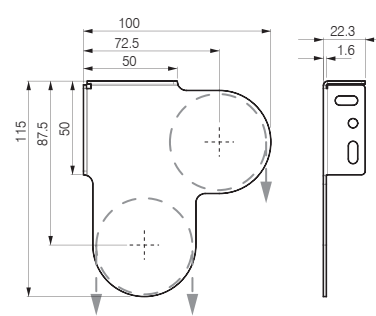
Dual brackets



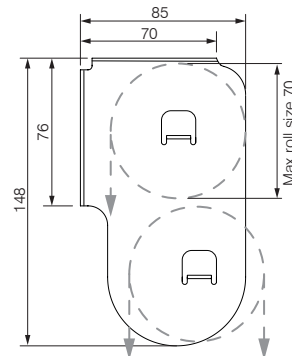
Square combo
Chains same side
(Top blind must be reverse rolled)



Super slimline – Top front
Chains same side
(Top blind must be reverse rolled)



Slimline
Chains either side
(Top blind must be reverse rolled)



Super slimline – Top back
Chains same side
(Top blind must be standard rolled)

TECHNICAL INFORMATION: OPTIONAL FASCIA / PELMET

95mm Rounded pelmet

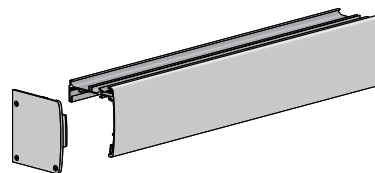
Details	Includes top which keeps off dust (85mm) Top or Face Fix brackets 3mm wide endcaps
---------	--

Standard colours	White, Black, Anodised
------------------	------------------------

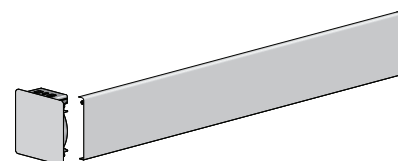
100mm Flat fascia

Details	Top or Face Fix (face fix with the endcaps) 4mm wide endcaps
---------	---

Standard colours	White, Black, Anodised
------------------	------------------------



95mm Rounded pelmet



100mm Flat fascia