



# Opus Panels


FilaSorb™ 14

acoufelt  
making quiet


# Product Detail

Application	Wall
Composition	100% polyester
Material	FilaSorb™
Recycled content	60% min
Weight	2800gsm
Thickness	14mm +/- 10% (12mm backing panel + 2mm skin)
Dimensions	1220 x 2800mm Custom size available upon request


# Sustainability




Made from 60% min.  
recycled content




Declare Red  
List Free



Generated using  
40% solar energy



Recyclable at  
end of lifespan



Total VOC's less  
than 0.5 mg/m³



# Technical Data


Fire test method	AS ISO 9705:2033 <small>(according to AS 5637.7:2015 requirements)</small>
Group number	Group 1
SMOGR <sub>ARC</sub> (in m2/s2 x 1000)	2.99
Fire test method	ASTM E48
Classification	Class A
Flame spread index	20
Smoke developed index	190
Total VOC test method	SCS-EC10.3-2014 v4.0 meeting standard CDPH/EHLB Standard Method v.1.2-2017
Total VOC result	≤ 0.5mg/m³
Colorfastness test method	ISO 105-B02
Rating	6-7

# Guarantees

Warranty against defects	20 years*
Color fastness warranty	20 years*

\*conditions apply

# QuickShip

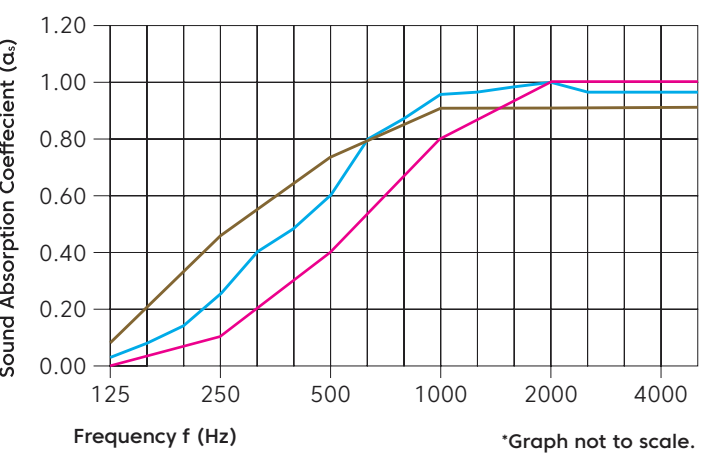


QuickShip  
Rapid

QuickShip Rapid products can  
be despatched within **1-2 days**.

# Acoustic Performance

Test method	AS ISO 354-2006: Acoustic - Measurement of sound absorption in a reverberation room
Installation method	A, tested with no air gap, 20mm air gap, 50mm air gap
Rating method	ISO 11654-2002 Acoustic – sound absorbers for use in buildings – rating of sound absorption
Test results	NRC 0.55 no air gap NRC 0.70 20mm air gap NRC 0.75 50mm air gap  SAA 0.56 no air gap SAA 0.70 20mm air gap SAA 0.76 50mm air gap

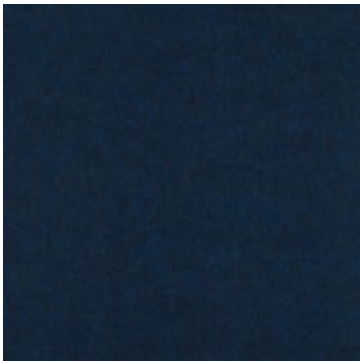


Frequency (Hz)	125	250	500	1000	2000	4000	NRC
α <sub>s</sub> no air gap	0.00	0.10	0.40	0.80	1.00	1.00	0.55
α <sub>s</sub> 20mm air gap	0.05	0.25	0.60	0.95	1.00	0.95	0.70
α <sub>s</sub> 50mm air gap	0.10	0.45	0.75	0.90	0.90	0.90	0.75

Performance Indices: **Noise Reduction Coefficient (NRC)** results represent the absorption coefficients measured at the one third octaves bands at 125, 250, 500, 1000, 2000 and 4000 Hz rounded to the nearest 0.05. Acoustic testing has been performed according to the methods mentioned above. Customisation of installation of the product could alter the results. **Sound Absorption Average (SAA)** indicates the absorption coefficient average for the twelve one-third octave bands ranging between 200 and 2500 Hz



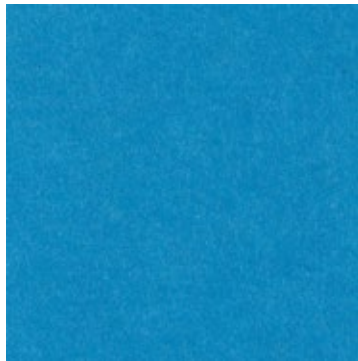
# Colorways



Midnight  
LRV – 3.50%



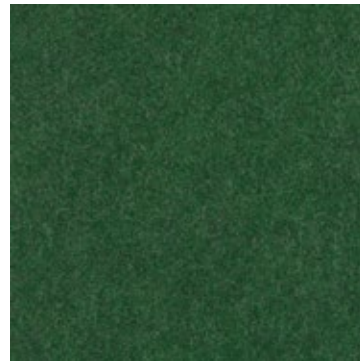
Denim  
LRV – 6.00%



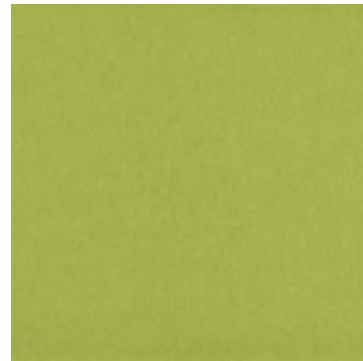
Azur  
LRV – 18.00%



Periwinkle  
LRV – 36.00%



Oregano  
LRV – 8.80%



Wasabi  
LRV – 38.00%



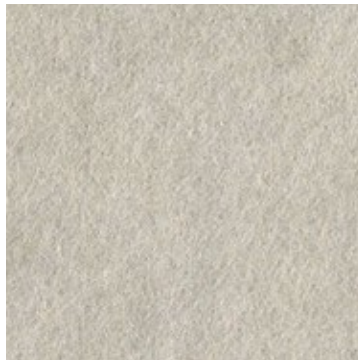
Carrot  
LRV – 20.00%



Peach  
LRV – 29.00%



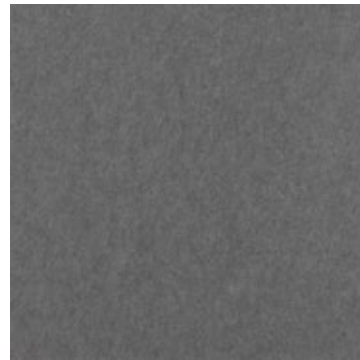
Ivory  
LVR – 40.00%



Almond  
LRV – 53.64%



Charcoal  
LRV – 5.46%



Slate  
LRV – 12.50%



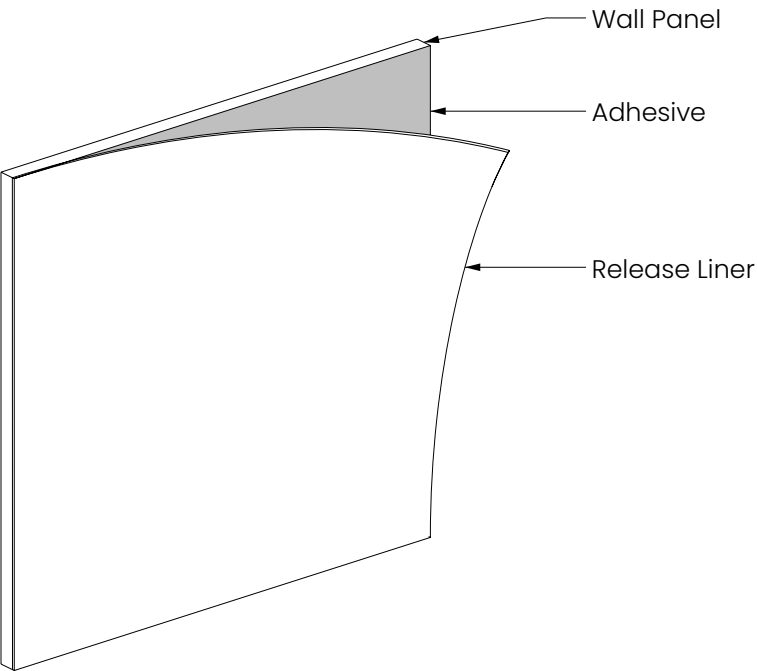
Platinum  
LRV – 42.00%



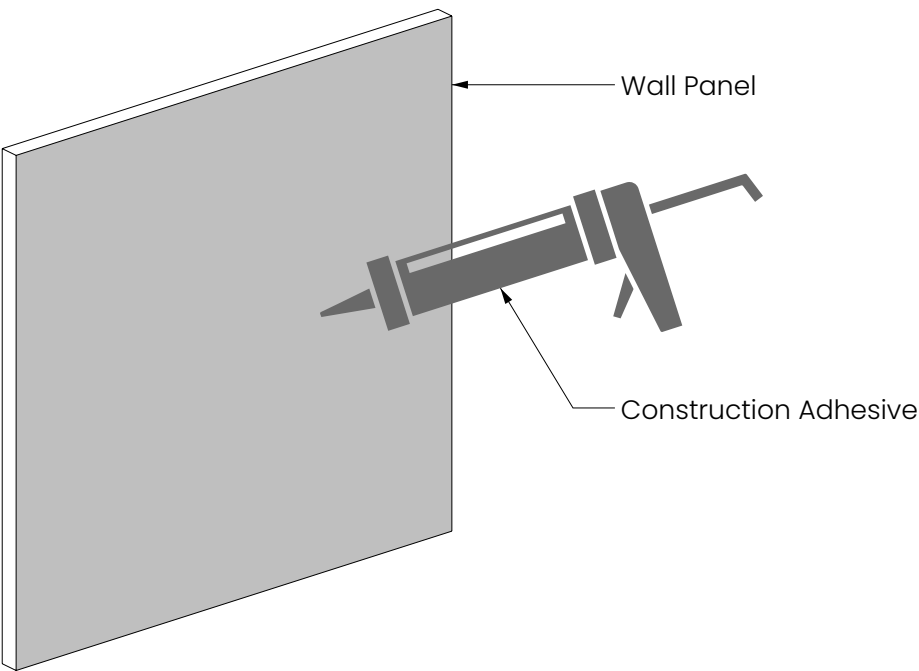
Berry  
LRV – 12.00%

# Mounting Methods

Peel and Stick Backing

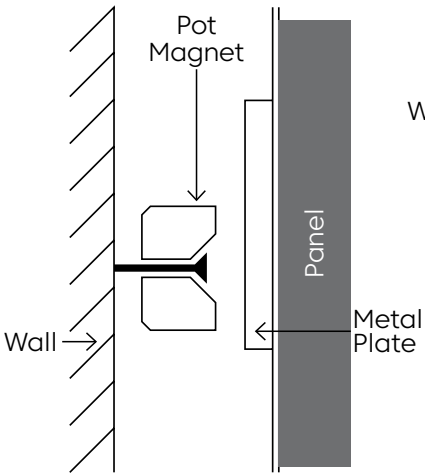


Construction Adhesive

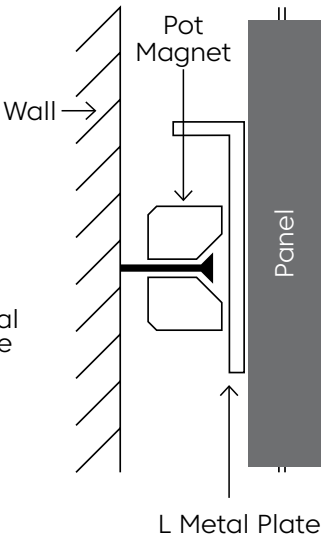


Pot Magnet Install

Wall Pot Magnet Install  
Metal Plate



Wall Pot Magnet Install  
L Plate + Metal Plate



L Plate Wall + Metal  
Plate Configuration

○ L Metal Plate    × Metal Plate

