



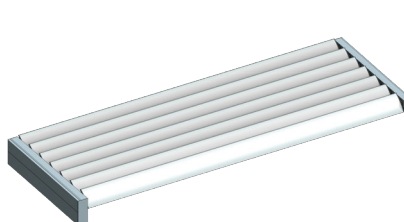
DRIVE SYSTEMS

SPIRAL PIVOT SYSTEM - THREE VARIANTS

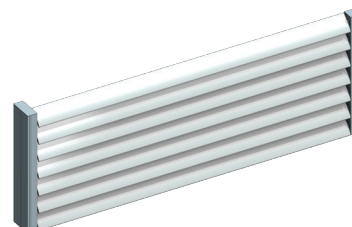
Hidden away the Spiral Pivot system is the very heart of Louvretec's operating system. Linked to a custom made gear box and driven by Somfy - the world's leading tubular motor manufacturer.

1. DOWNUNDER OR OUTBACK SPIRAL PIVOT

Designed specifically for Louvretec's new generation louvres, not only is the pivot operating system hidden from sight, so too is the motor and gearbox providing the cleanest look imaginable.



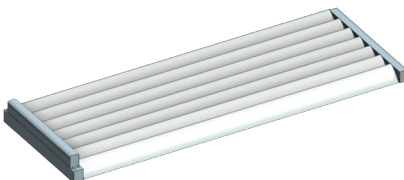
OVERHEAD PANEL - DOWNUNDER



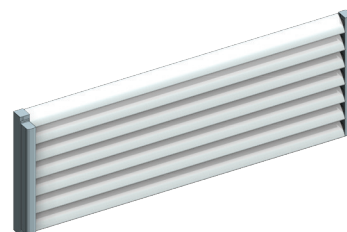
VERTICAL PANEL - DOWNUNDER/OUTBACK

2. MOTOR OVER, FRONT OR BACK SPIRAL PIVOT

This tried and true system has been well proven over many years and offers a wide range of installation options.



OVERHEAD PANEL - MOTOR OVER

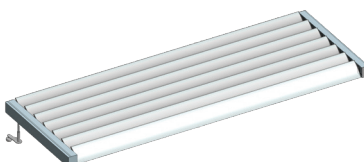


VERTICAL PANEL - MOTOR FRONT

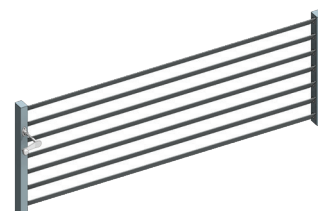
3. HAND OPERATED SPIRAL PIVOT

Using a custom engineered gearbox with a stainless steel crank handle all Louvretec sun louvres are available as hand operable in lieu of motorised.

The louvres can be operated with ease with the handle being detachable for storage when not in use.



OVERHEAD PANEL - HAND OPERABLE



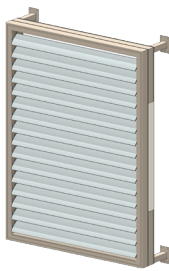
VERTICAL PANEL - HAND OPERABLE



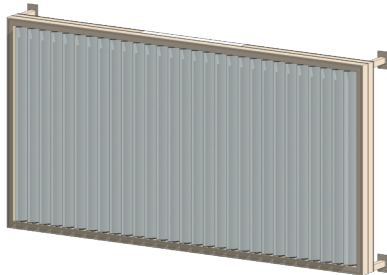
DRIVE SYSTEMS

SUPER ELAM STREET STRUCTURAL FRAME WITH SUB-FRAME & ELAM STREET STRUCTURAL FRAME

Louvretec now has two structural sub-frames for operable Spiral Pivot Sun Louvres.



SUPER ELAM STREET STRUCTURAL FRAME WITH SUB-FRAME. HORIZONTAL BLADES



SUPER ELAM STREET STRUCTURAL FRAME WITH SUB-FRAME. VERTICAL BLADES

1. SUPER ELAM STREET STRUCTURAL FRAME WITH SUB-FRAME

Super Elam Street Structural Frame is a new design incorporating an upgraded 63mm wide Spiral Pivot system supported by a 63x100 structural sub-frame.

The motor sits within the sub-frame accessible via a concealed motor access cover.

Super Elam Street Structural Frame With Sub-Frame can be inserted in to an opening or fixed back to the building by 100x50 fixing legs.

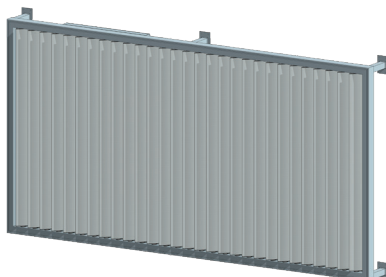
Fixing can also be by flat brackets attached to the building and slotted over milled openings in the sub-frame.

Single or dual panel drive available.

Blades can be run horizontally or vertically.



ELAM STREET STRUCTURAL FRAME. HORIZONTAL BLADES



ELAM STREET STRUCTURAL FRAME - VERTICAL BLADES

2. ELAM STREET STRUCTURAL FRAME

The Elam Street Structural Frame consists of the new 63mm wide Spiral Pivot system without the structural sub-frame.

The Somfy motor sits either front or back within an extruded motor cover.

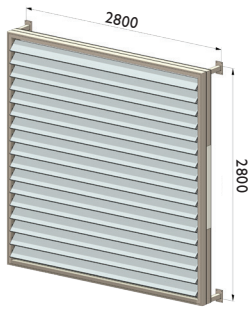
An Elam Street Structural Frame can be inserted into an opening or fixed back to the building by 100x50 fixing legs.

On larger panels more legs are required with an Elam Street Structural Frame due to there being no structural sub-frame.

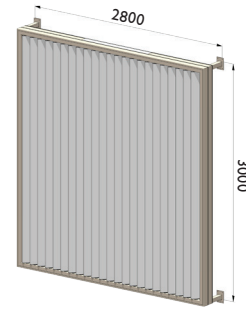
Single or dual panel available.

Blades can be run horizontally or vertically.

TYPICAL DETAIL : SUPER ELAM STREET STRUCTURAL FRAME WITH SUB-FRAME & ELAM STREET STRUCTURAL FRAME BETWEEN FIXING POINTS GUIDE

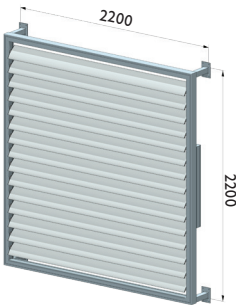


GUIDELINES AT A GLANCE
MAXIMUM FREE SPAN
BETWEEN SUPPORT SHOWN

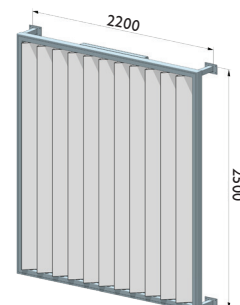


SUPER ELAM STREET STRUCTURAL FRAME -
BLADES HORIZONTAL

SUPER ELAM STREET STRUCTURAL FRAME -
BLADES VERTICAL



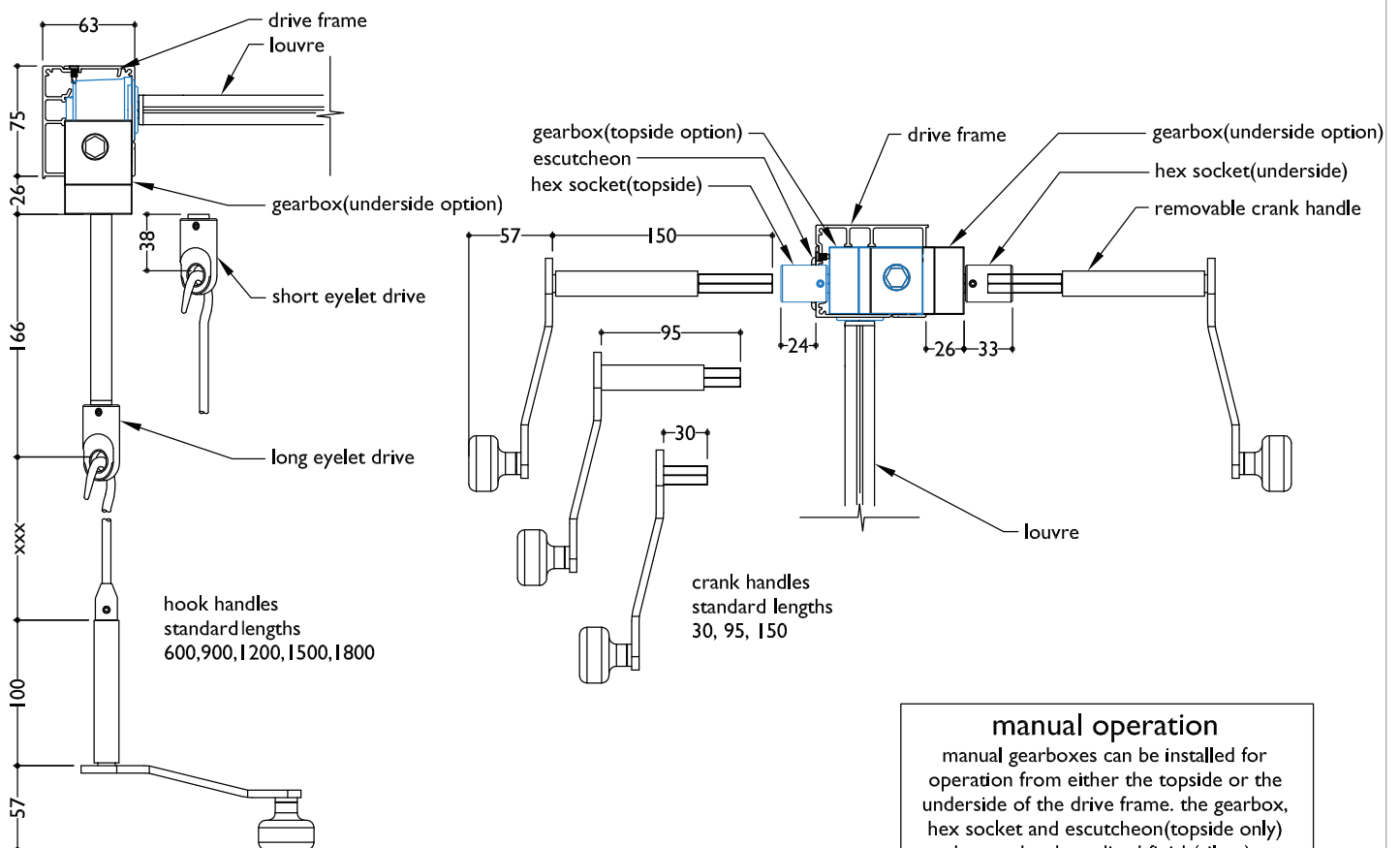
GUIDELINES AT A GLANCE
MAXIMUM FREE SPAN
BETWEEN SUPPORT SHOWN



ELAM STREET STRUCTURAL FRAME - BLADES HORIZONTAL

ELAM STREET STRUCTURAL FRAME - BLADES VERTICAL

TYPICAL DETAIL : ELAM STREET STRUCTURAL FRAME OVERHEAD & HORIZONTAL LOUVRES - HANDLE OPTIONS



manual operation

manual gearboxes can be installed for operation from either the topside or the underside of the drive frame. the gearbox, hex socket and escutcheon(topside only) have a hard anodised finish(silver). louvre handles are stainless steel/aluminium



MOTORISED & HAND OPERABLE DRIVE SYSTEMS

MAXI-DRIVE

Louvretec's Maxi-Drive is a stylish new operating system designed to meet the ever increasing demand for motorising larger louvres. Also operates 300mm Maxi Louvre, Ultra 50 300mm and 450mm Square and Mitred options.

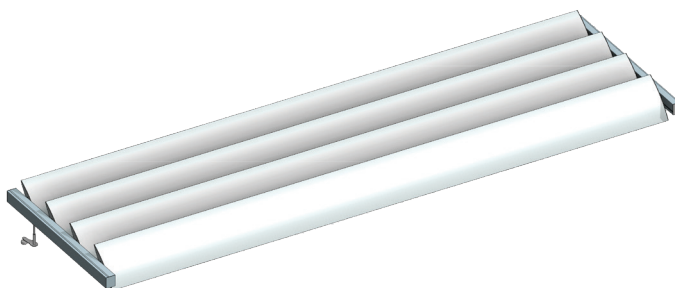


MAXI-DRIVE 300MM MAXI LOUVRES VERTICAL PANEL

MAXI-DRIVE

SOMFY MOTORISED 300MM & 450MM LOUVRES

- The Somfy motor locates within a structural frame driving a heavy duty custom engineered gearbox.
- The gearbox operates the drive blade which via a heavy duty connecting arm operates the complete louvre panel.
- Strong, elegant and simple



MAXI-DRIVE 300MM HAND OPERABLE PANEL

MAXI-DRIVE

HAND OPERABLE 300MM & 450MM LOUVRES

- A hand operable option is also available.
- The gearbox is adapted to take an overhead hand crank or rear winder for vertical panels



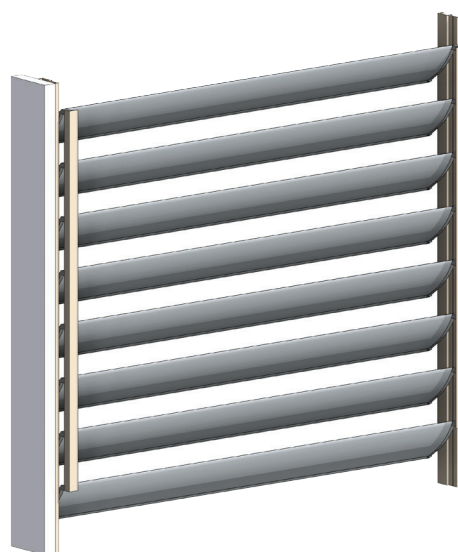
HAND OPERABLE DRIVE SYSTEMS

KISS PIVOT SYSTEM & BELLA VISTA SYSTEM

Louvretec's two distinctive, easy to use hand operable louvre systems. The KISS Pivot system is for airfoil shaped blades, the Bella Vista is for the rectangular 95mm louvre blade.

1. KISS PIVOT SYSTEM

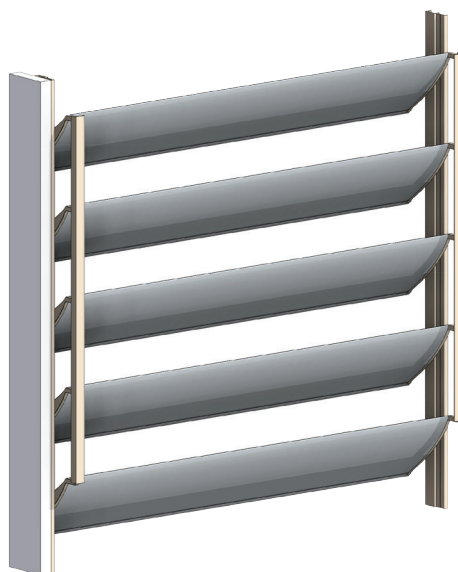
- The KISS Pivot system operates a number of Airfoil shaped blades as well as the 95mm Bella Vista Rectangular blade.
- The KISS Pivot system is elegant and simple, tried and true and well proven in the market place.
- An easy to operate, well proven sun louvre pivot system.
- Operates off double drive-arms that can be locked closed or in various open positions.
- Offers fully adjustable louvres at little more than fixed louvre prices.
- Ideal as a stand-alone panel or used within sliding, bifolding hinged doors.



KISS PIVOT SYSTEM - 90MM MIDI LOUVRE PANEL



KISS PIVOT SYSTEM - 95MM BELLA VISTA RECTANGULAR LOUVRE PANEL



KISS PIVOT SYSTEM - 150MM MIDI LOUVRE PANEL