

## PRODUCT OVERVIEW RL 600 SQUARE LOUVRE



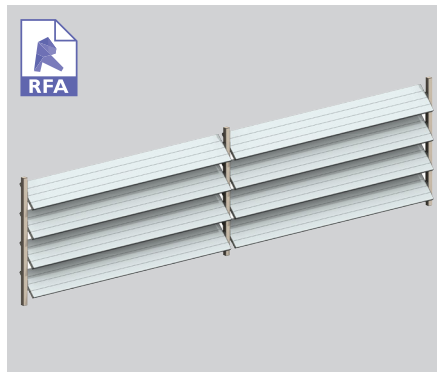
## RL 600 SQUARE LOUVRE

### rectangular louvre

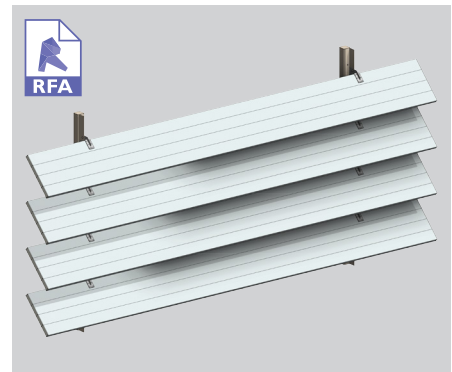
Introducing Louvretec's new range of Rectangular Louvres (RL). The RL 600 Square is one of six large rectangular shaped louvres designed to meet demand for large custom louvre systems. Two blade shapes are available - the traditional square end or mitred to a 7° angle as per its partner blade the RL 600 Mitre (see next pg). Both RL 600 louvres can be Maxi-Drive motorised, end or bracket fixed. The specific design and engineering of the Maxi-Drive, end & bracket fixing systems ensures a clean, uncluttered appearance & outstanding spanning capabilities. For both commercial and residential applications.



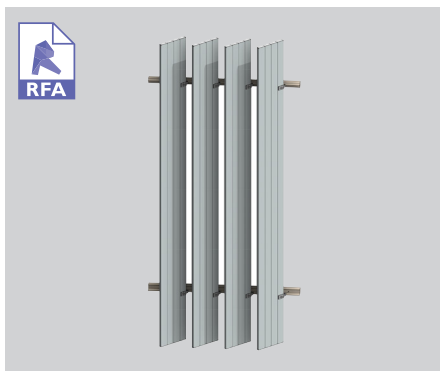
END FIXED - VERTICAL PANEL



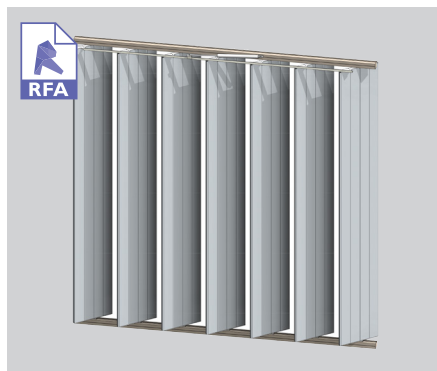
END FIXED - HORIZONTAL PANEL



BRACKET FIXED - HORIZONTAL PANEL



BRACKET FIXED - VERTICAL



MAXI DRIVE MOTORISATION UNDER DEVELOPMENT

### SURFACE COATINGS

A wide range of options are available.



ANODISED



WOOD FINISH



POWDERCOATED

### OPERATING THIS SUN LOUVRE - THE CHOICE IS YOURS

Fixed options

Operable systems



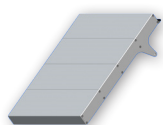
LOUVRETEC  
GEARBOX



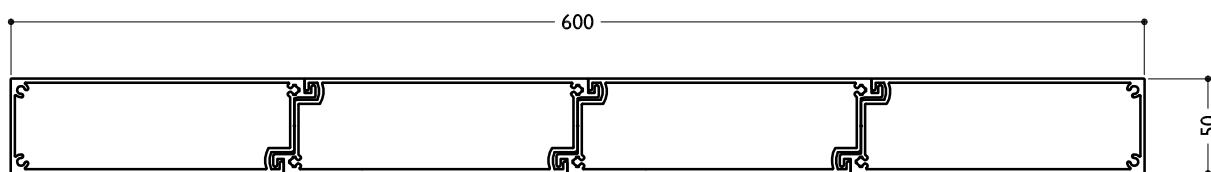
HOME MOTION by  
**somfy**

MOTORS AND SENSORS

## SUN LOUVRES - RECTANGULAR SPECIFICATIONS



### TECHNICAL DETAILS RL 600 SQUARE LOUVRE



scale 1:4

BLADE SPECIFICATIONS			
Blade cover - opening system	607 mm	Weight per lineal metre	11.10 kgm
Weight per square metre - opening system	19.0 sqm	Actual blade width	600 mm
Blade Centres - opening system	607 mm		

SPANS AT A GLANCE NB Refer Engineering Section. Climate, terrain, shielding, location, type of structure contribute to determine spans.

WIND ZONE	INSIDE	LOW	MEDIUM	HIGH	VERY HIGH	EXTRA HIGH
Factored wind speed at building		32m/s 115km/hr	37m/s 133km/hr	44m/s 158km/hr	50m/s 179km/hr	55m/s 198km/hr
Ultimate limit state loads (kPa)		+0.92 & -1.15	+1.23 & -1.53	+1.74 & -2.17	+2.24 & -2.80	+2.71 & -3.39
Adjustable and Fixed Vertical and Horizontal	5800	5800	5800	5150	4500	4050

## INSTALLATION OPTIONS



### MAXI DRIVE SYSTEM: CALCULATE OPTIMUM FRAME OPENING SIZES

Width: Check engineering limits

Height: Calculation example showing 8 blades

7 blades x 607	4259
1 blade at 600	600
8 blades	=4849



### END FIXED

Louvres at any pitch

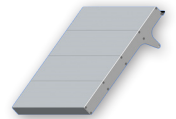
Louvres at any centre



### BRACKET FIXED

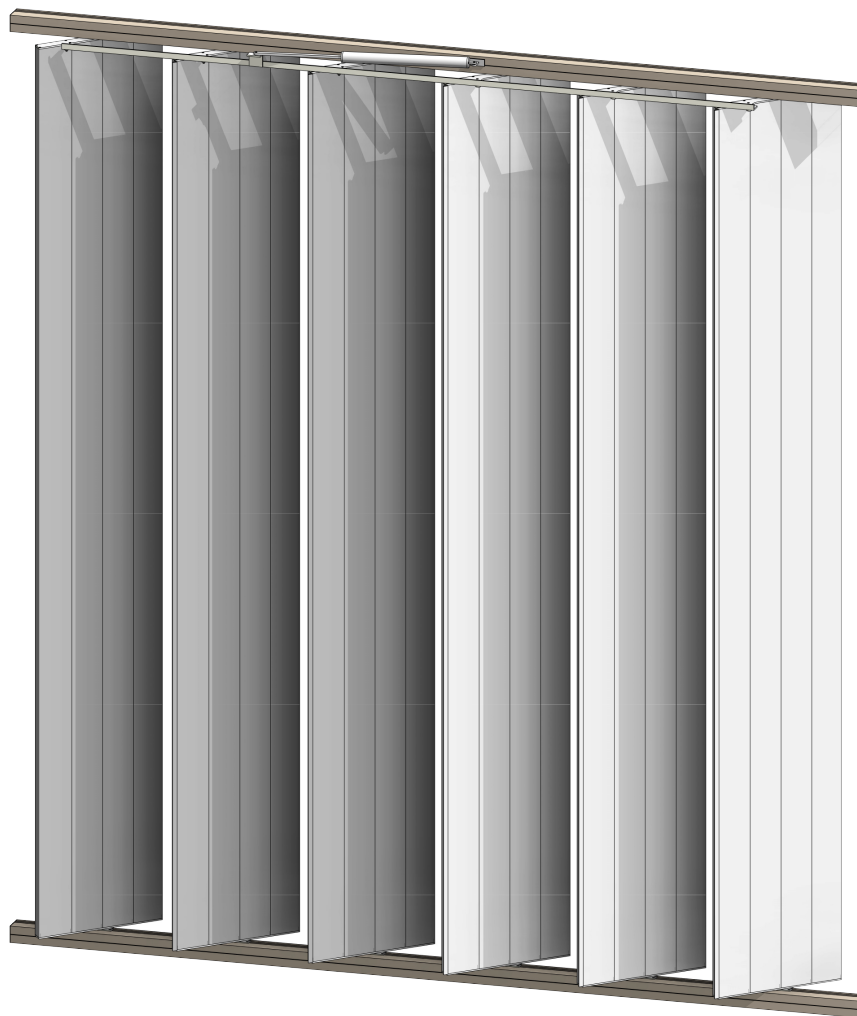
Louvres at any pitch

Louvres at any centre



**PRODUCT DETAILS** RL 600 SQUARE & RL 600 MITRE MOTORISED MAXI DRIVE LOUVRES

**TYPICAL DETAIL 3D FILE** RL 600 SQUARE & RL 600 MITRE MOTORISED MAXI DRIVE LOUVRES

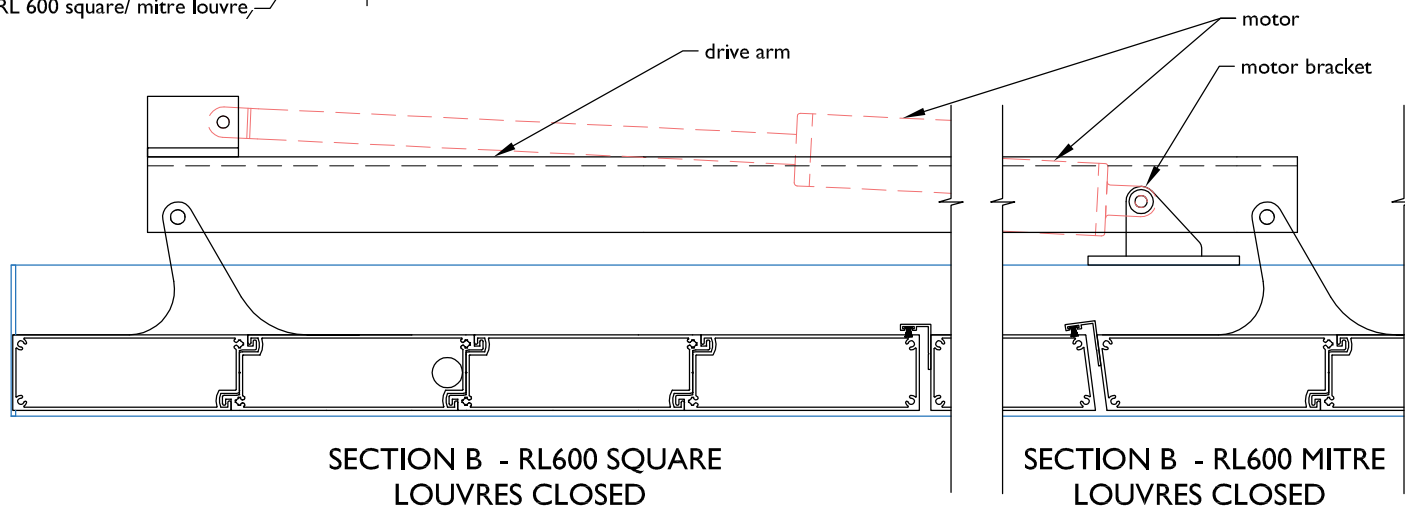
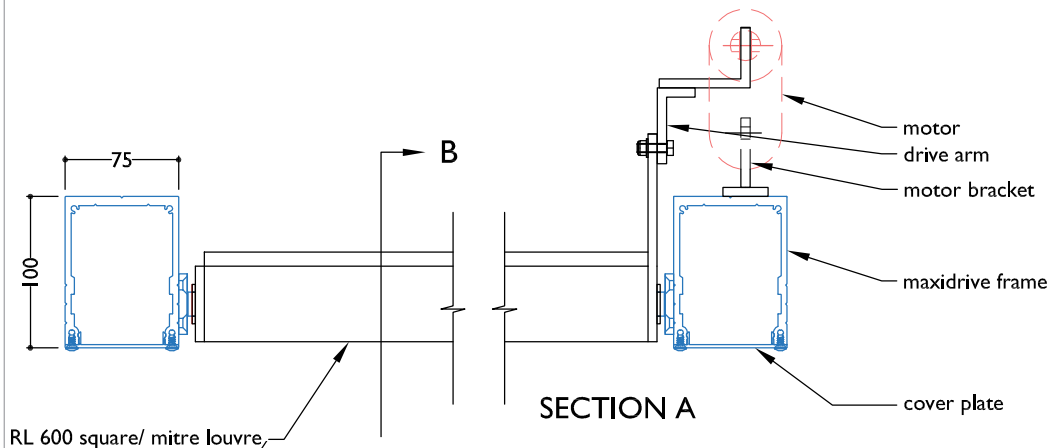


**RL600 MITRE**

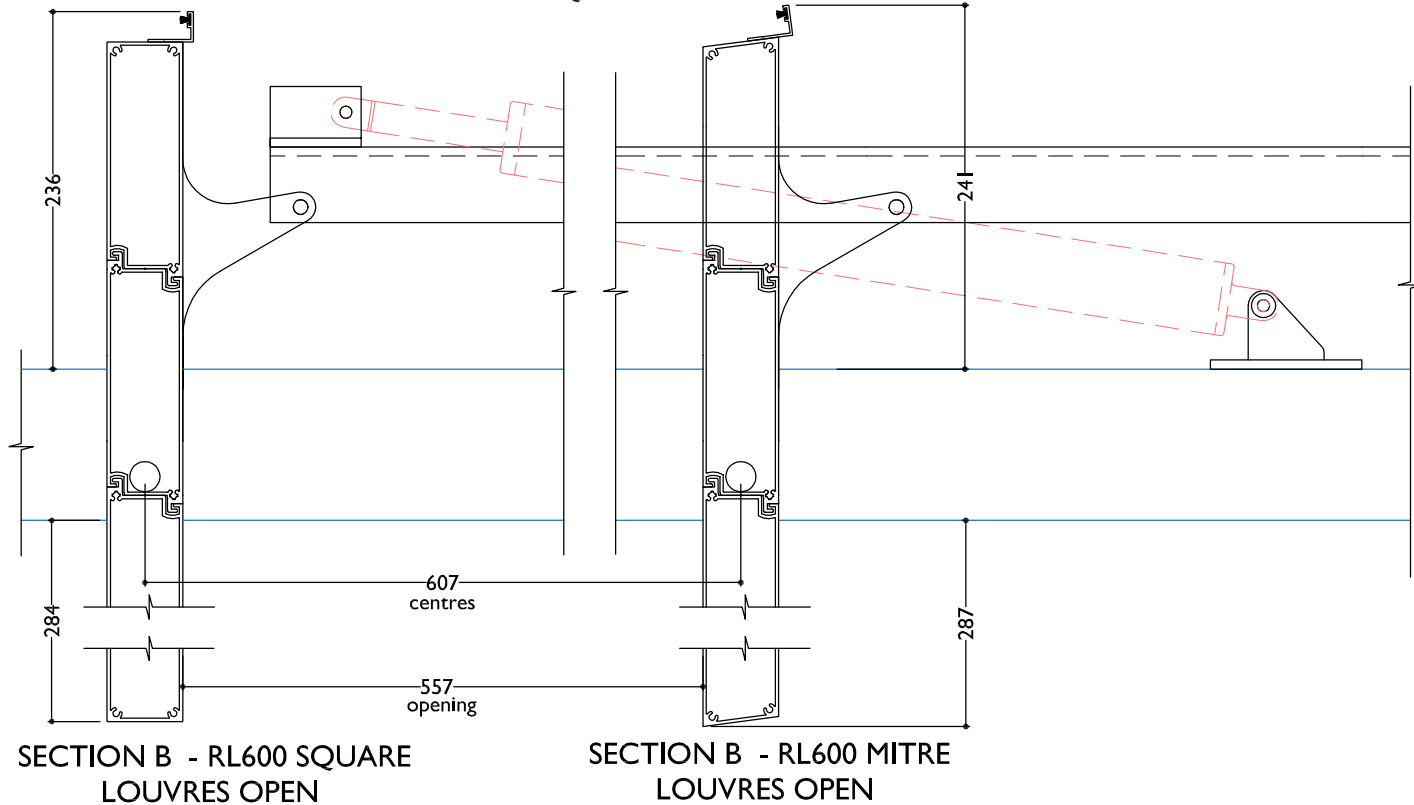
**RL600 SQUARE**

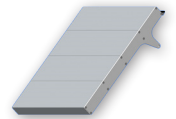
# TYPICAL DETAIL : MAXI DRIVE MOTORISED RL 600 SQUARE & RL 600 MITRE LOUVRES

## SECTION - MAXI DRIVE MOTORISED RL 600 SQUARE LOUVRES CLOSED



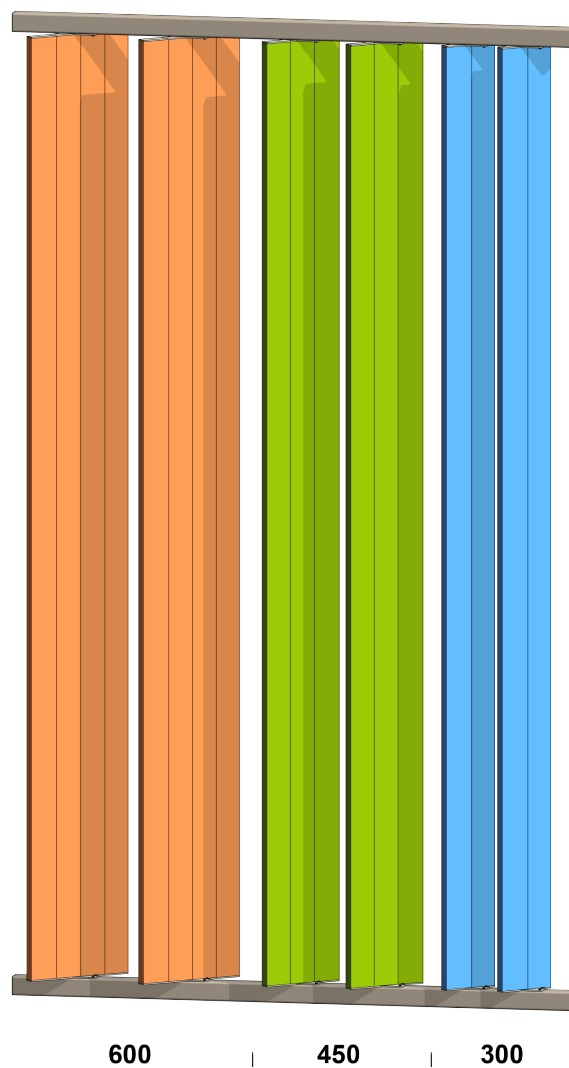
## SECTION - MAXI DRIVE MOTORISED RL 600 SQUARE LOUVRES OPEN





**PRODUCT DETAILS** RL 300/450/600 SQUARE END FIXED LOUVRES

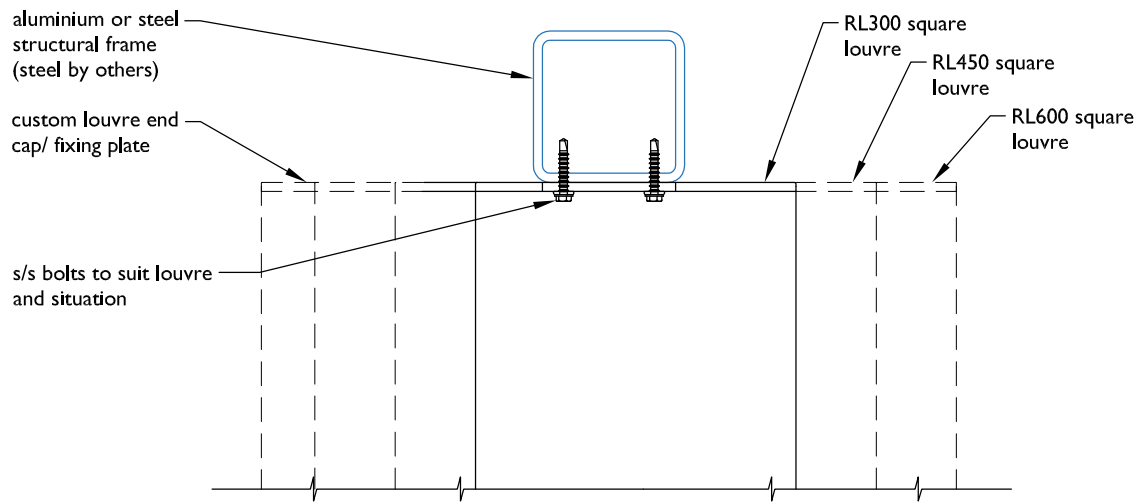
**TYPICAL DETAIL 3D FILE** RL 300/450/600 SQUARE END FIXED LOUVRES



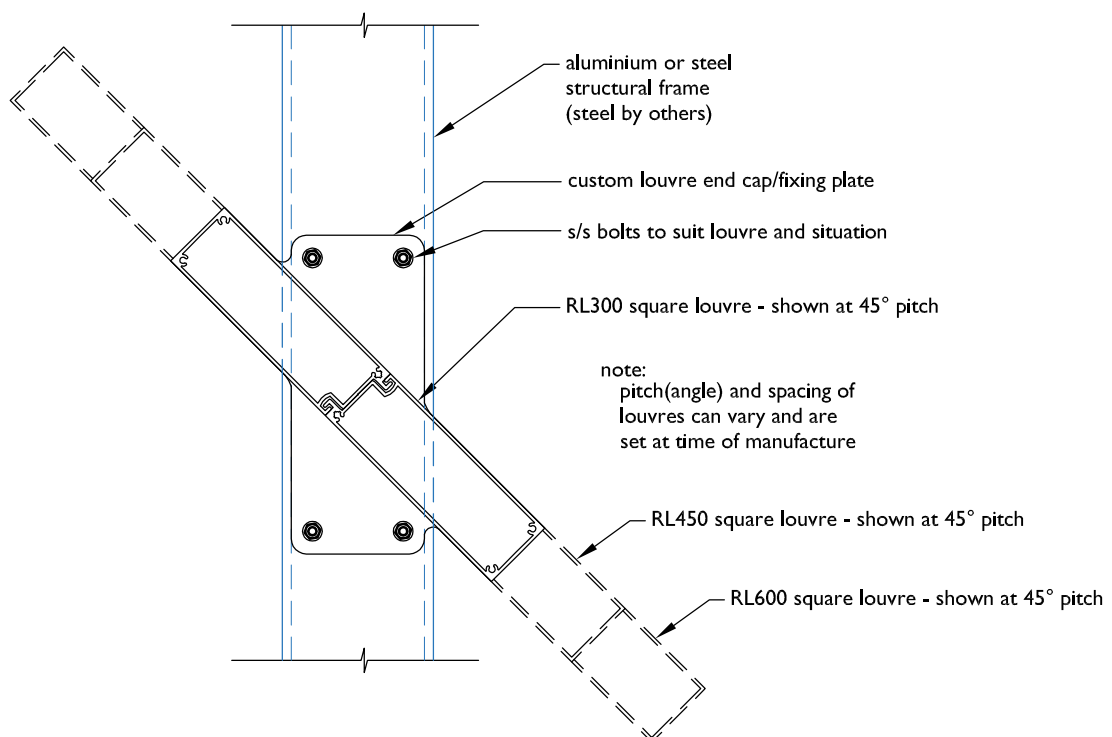
600 | 450 | 300

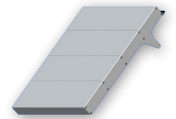
## TYPICAL DETAIL : END FIXED RL 300/450/600 SQUARE LOUVRES

### PLAN - END FIXED RL 300/450/600 SQUARE LOUVRE



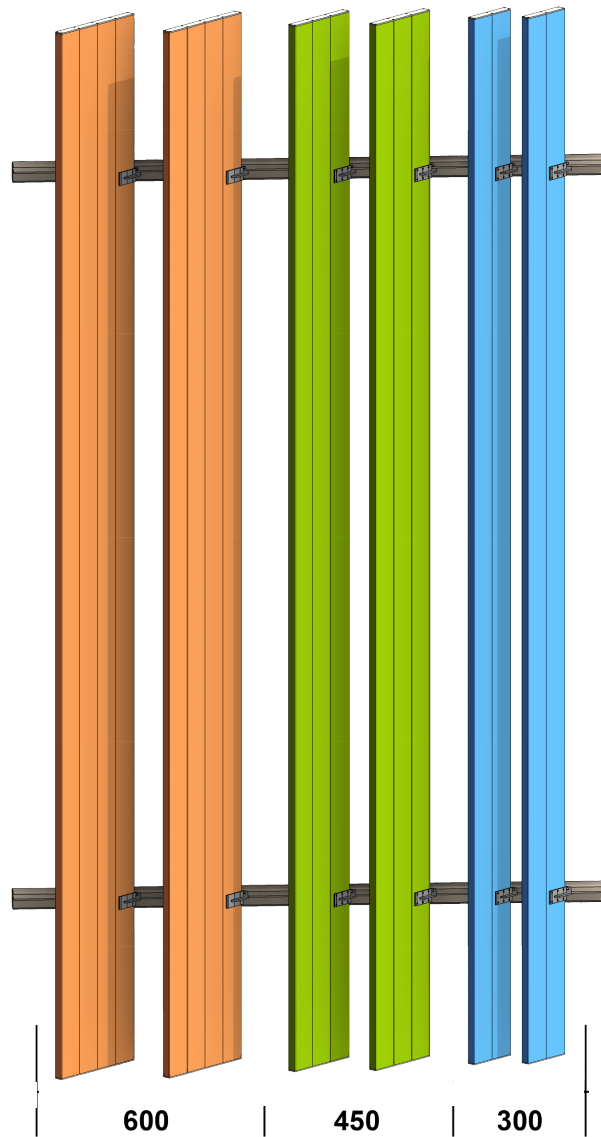
### SECTION - END FIXED RL 300/450/600 SQUARE LOUVRE





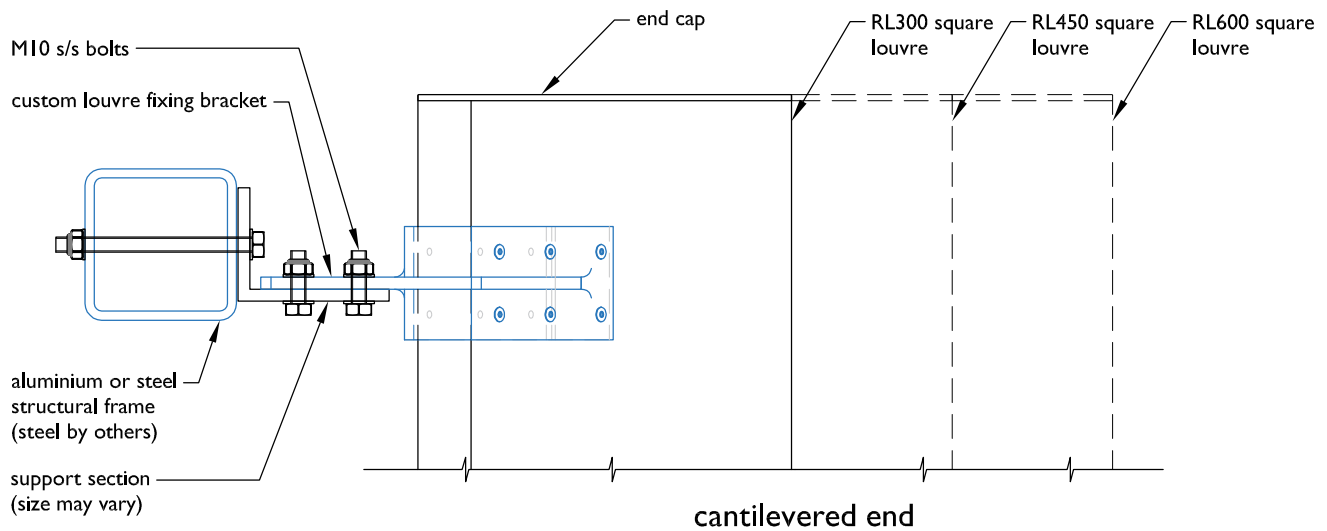
**PRODUCT DETAILS** RL 300/450/600 SQUARE BRACKET FIXED LOUVRES

**TYPICAL DETAIL 3D FILE** RL 300/450/600 SQUARE BRACKET FIXED LOUVRES



## TYPICAL DETAIL : BRACKET FIXED RL 300/450/600 SQUARE LOUVRES

PLAN - BRACKET FIXED RL 300/450/600 SQUARE LOUVRE



SECTION - BRACKET FIXED RL 300/450/600 SQUARE LOUVRE

