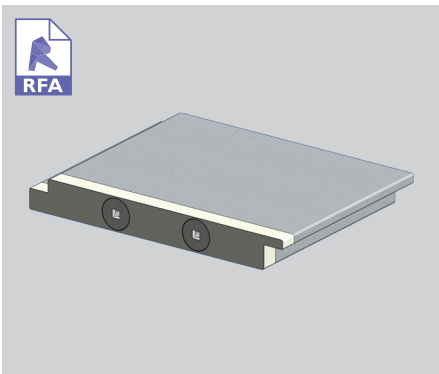


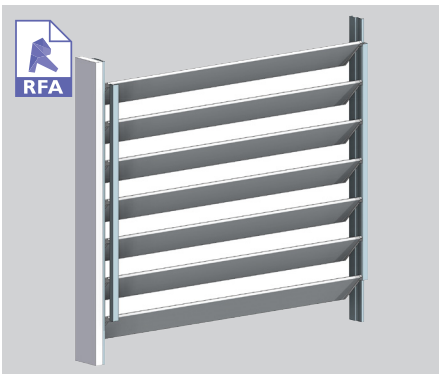
PRODUCT OVERVIEW 95MM BELLA VISTA

95MM BELLA VISTA
a rectangular option for infills

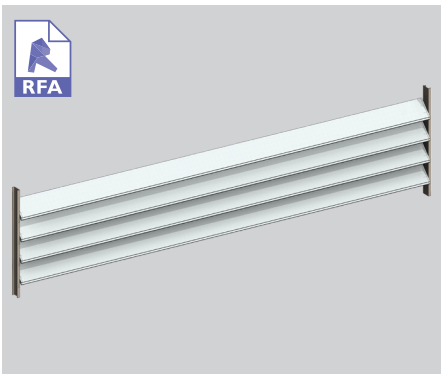
The Bella Vista family of two louvre blades is available in standard or heavy versions and offers a rectangular option to the 90mm KISS Midi Louvre. Available as a hand operated KISS Pivot system and offering the advantages of fully adjustable louvres at little more than fixed louvre prices. The rectangular blades close onto a woolpile strip and sit flush when closed giving a pleasing contrast to traditional shaped louvres. Particularly well suited to hinged or sliding shutters. Also available end fixed.



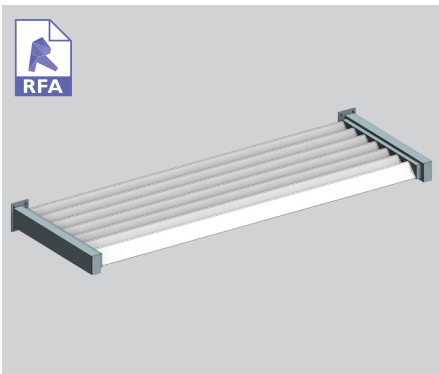
95MM BELLA VISTA LOUVRE



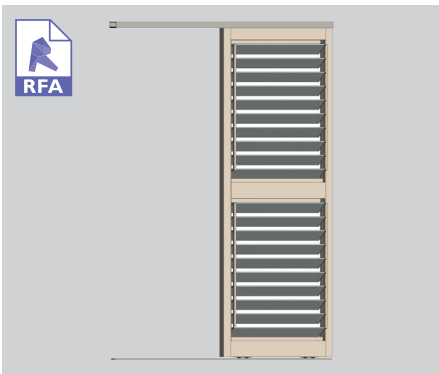
95MM BELLA VISTA KISS PANEL



END FIXED VERTICAL



END FIXED OVERHEAD



95MM BELLA VISTA SLIDING DOOR



95MM BELLA VISTA BIFOLD DOOR

SURFACE COATINGS

A wide range of options are available.



ANODISED



WOOD FINISH



POWDERCOATED

OPERATING THIS SUN LOUVRE - THE CHOICE IS YOURS

Fixed options

Operable systems



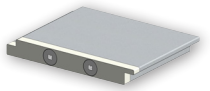
END
FIXED



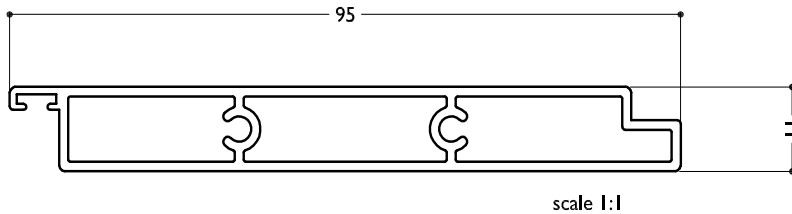
BRACKET
FIXED



KISS
PIVOT



TECHNICAL DETAILS 95MM BELLA VISTA



BLADE SPECIFICATIONS			
Blade cover - opening system	90 mm	Weight per lineal metre	0.68 lm
Weight per square metre - opening system	7.55 kg/sqm	Actual blade width	95 mm
Blade Centres - opening system	90 mm		

SPANS AT A GLANCE NB Refer Engineering Section. Climate, terrain, shielding, location, type of structure contribute to determine spans.

WIND ZONE	INSIDE	LOW	MEDIUM	HIGH	VERY HIGH	EXTRA HIGH
Factored wind speed at building		32m/s 115km/hr	37m/s 133km/hr	44m/s 158km/hr	50m/s 179km/hr	55m/s 198km/hr
Ultimate limit state loads (kPa)		+0.92 & -1.15	+1.23 & -1.53	+1.74 & -2.17	+2.24 & -2.80	+2.71 & -3.39
Adjustable and Fixed Horizontal and Vertical	2550	2100	1900	1700	1550	1450

INSTALLATION OPTIONS



KISS PIVOT SYSTEM: CALCULATE OPTIMUM FRAME OPENING SIZES

Width: Check engineering limits

Height: Calculation example showing 17 blades

STEP 1

16 blades x 90	1440
1 blade at 95	95
17 blades	=1535

STEP 2

Blade cover	1535
+ top and bottom closing angles allow for	
16mm + 16mm	32
Total exact opening height	=1567*

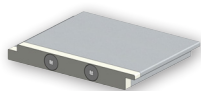
*This is inside measure - not outer frame size.



END FIXED

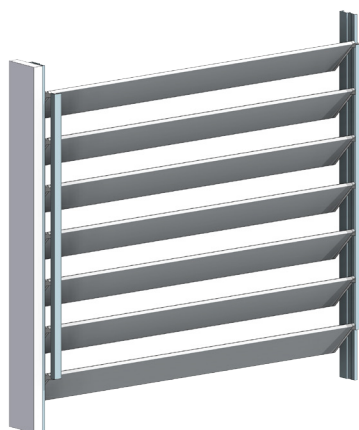
Louvres at any pitch

Louvres at any centre

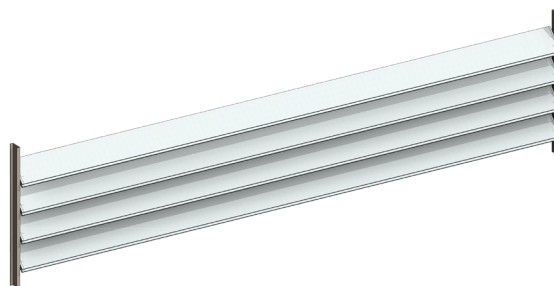


PRODUCT DETAILS 95MM BELLA VISTA

TYPICAL DETAIL 3D FILES 95MM BELLA VISTA KISS PIVOT AND END FIXED

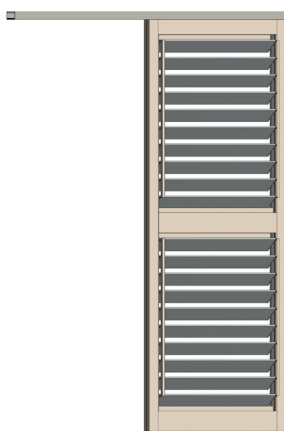


95mm Bella Vista kiss pivot panel.



95mm Bella Vista end fixed vertical panel.

TYPICAL DETAIL 3D FILES 95MM BELLA VISTA SLIDING AND BIFOLD DOORS



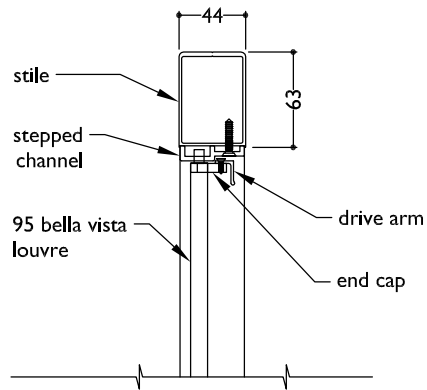
95mm Bella Vista in sliding door.



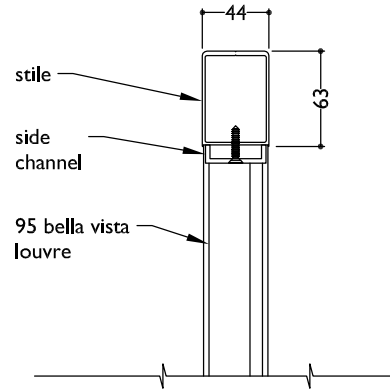
95mm Bella Vista in Bi-fold door.

TYPICAL DETAIL : 95MM BELLA VISTA KISS PIVOT AND END FIXED

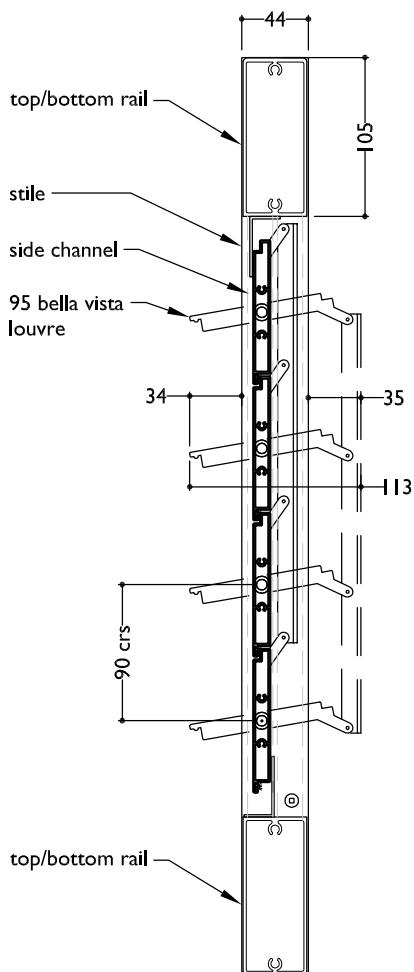
PLAN
95 BELLA VISTA KISS PIVOT IN DOOR PANEL



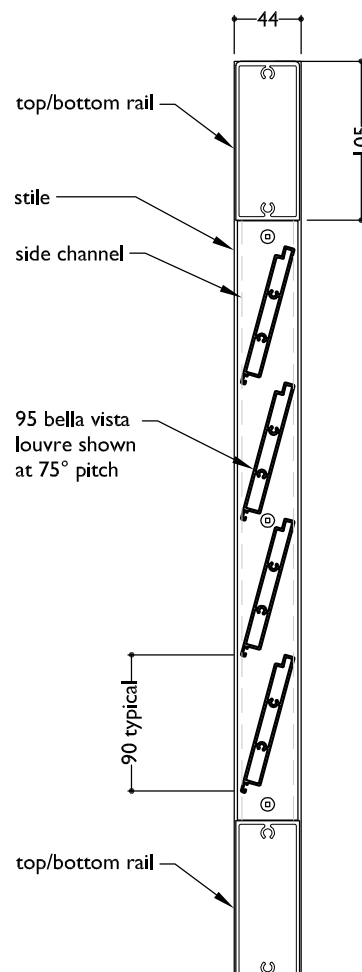
PLAN - END FIXED
95 BELLA VISTA IN DOOR PANEL



SECTION
95 BELLA VISTA KISS PIVOT IN DOOR PANEL



SECTION - END FIXED
95 BELLA VISTA IN DOOR PANEL



note:
pitch(angle) and spacing of
louvres can vary and are
set at time of manufacture