

PRODUCT OVERVIEW 95MM BELLA VISTA HEAVY

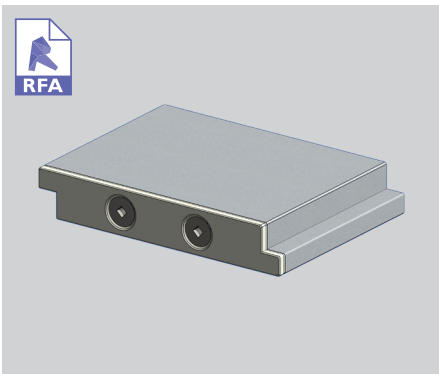
95MM BELLA VISTA HEAVY
ideal for exposed locations

The Bella Vista family of two louvre blades is available in standard or heavy versions and offers a rectangular option to the 90mm KISS Midi Louvre.

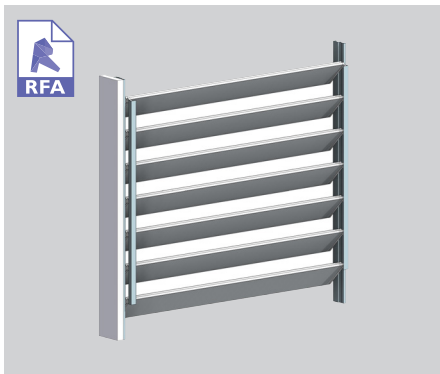
Bella Vista Heavy is a hand operated KISS Pivot system and shares all the characteristics of the 95mm Bella Vista.

Designed to incorporate increased spanning capability this blade out performs all other louvres in its class and is particularly well suited to exposed locations.

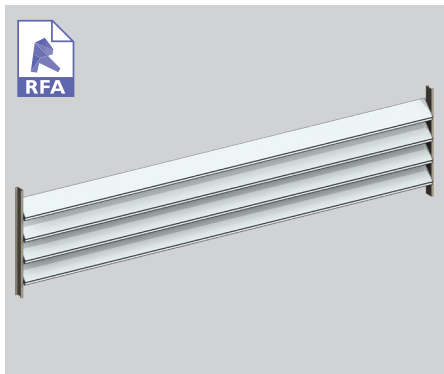
Also available end fixed.



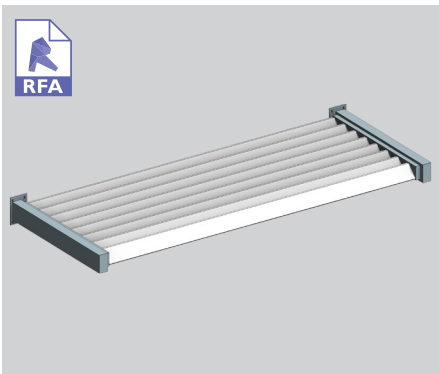
95MM BELLA VISTA HEAVY BLADE



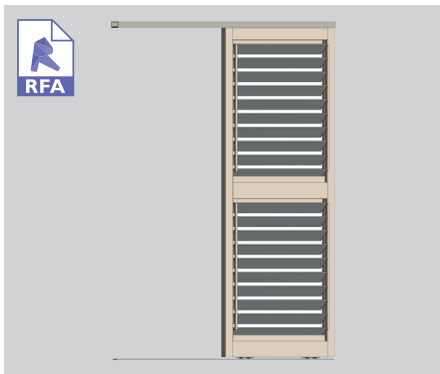
95MM BELLA VISTA HEAVY KISS PANEL



END FIXED VERTICAL



END FIXED OVERHEAD



95MM BELLA VISTA HEAVY SLIDING DOOR



95MM BELLA VISTA HEAVY BIFOLD DOOR

SURFACE COATINGS

A wide range of options are available.



ANODISED



WOOD FINISH



POWDERCOATED

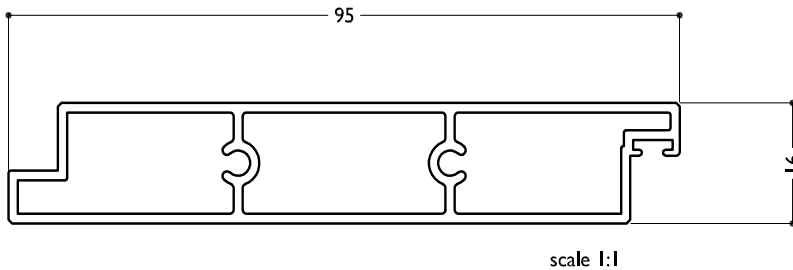
OPERATING THIS SUN LOUVRE - THE CHOICE IS YOURS

Fixed options

Operable systems



TECHNICAL DETAILS 95MM BELLA VISTA HEAVY



BLADE SPECIFICATIONS			
Blade cover - opening system	90 mm	Weight per lineal metre	0.91 kg/lm
Weight per square metre - opening system	10.1 kg/sqm	Actual blade width	95 mm
Blade Centres - opening system	90 mm		

SPANS AT A GLANCE NB Refer Engineering Section. Climate, terrain, shielding, location, type of structure contribute to determine spans.

WIND ZONE	INSIDE	LOW	MEDIUM	HIGH	VERY HIGH	EXTRA HIGH
Factored wind speed at building		32m/s 115km/hr	37m/s 133km/hr	44m/s 158km/hr	50m/s 179km/hr	55m/s 198km/hr
Ultimate limit state loads (kPa)		+0.92 & -1.15	+1.23 & -1.53	+1.74 & -2.17	+2.24 & -2.80	+2.71 & -3.39
Adjustable and Fixed Horizontal and Vertical	3000	2800	2550	2250	2050	1900

INSTALLATION OPTIONS



CALCULATE OPTIMUM FRAME OPENING SIZES

Width: Check engineering limits

Height: Calculation example showing 17 blades

STEP 1

16 blades x 90	1440
1 blade at 95	95
17 blades	=1535

STEP 2

Blade cover	1535
+ top and bottom closing angles allow for	
16mm + 16mm	32
Total exact opening height	=1567*

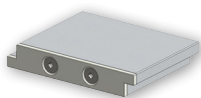
*This is inside measure - not outer frame size. Louvres can be any pitch any centre.



END FIXED

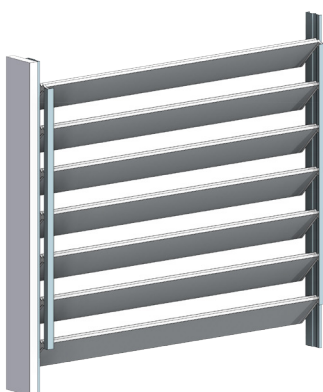
Louvres at any pitch

Louvres at any centre

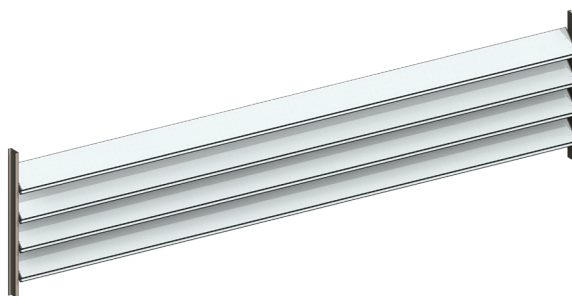


PRODUCT DETAILS 95MM BELLA VISTA HEAVY

TYPICAL DETAIL 3D FILES 95MM BELLA VISTA HEAVY KISS PIVOT AND END FIXED

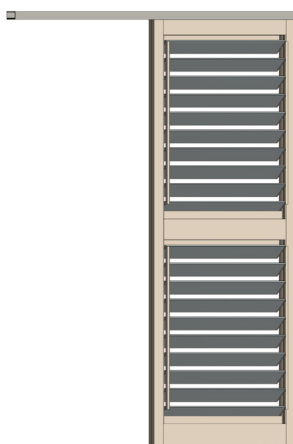


95mm Bella Vista Heavy KISS pivot panel



95mm Bella Vista Heavy end fixed vertical panel

TYPICAL DETAIL 3D FILES 95MM BELLA VISTA HEAVY SLIDING AND BIFOLDING DOORS



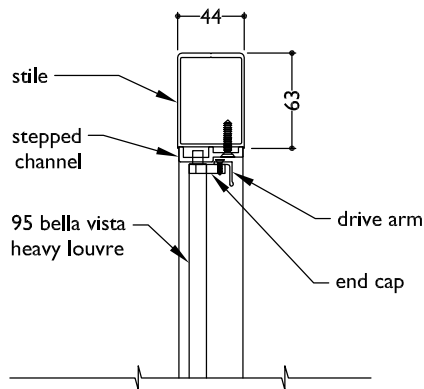
95mm Bella Vista Heavy in sliding door



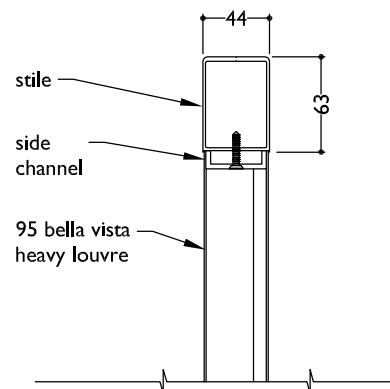
95mm Bella Vista Heavy in bifold door

**TYPICAL DETAIL : 95MM BELLA VISTA HEAVY
END FIXED / KISS PIVOT**

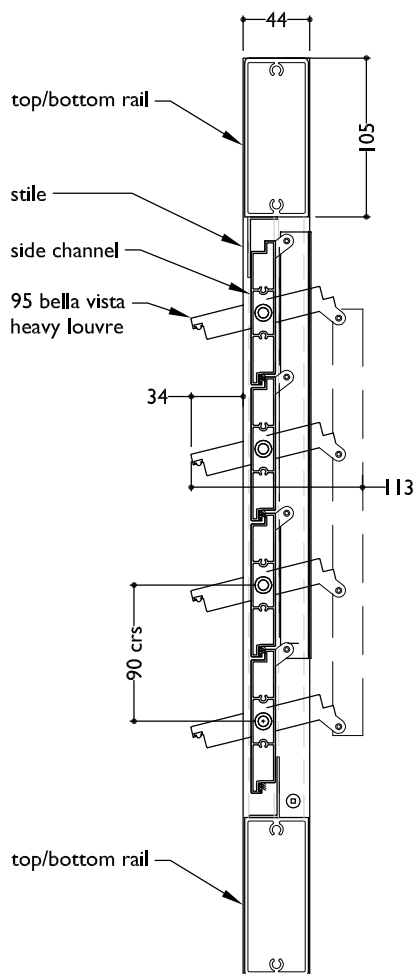
PLAN
95 BELLA VISTA HEAVY KISS PIVOT IN DOOR PANEL



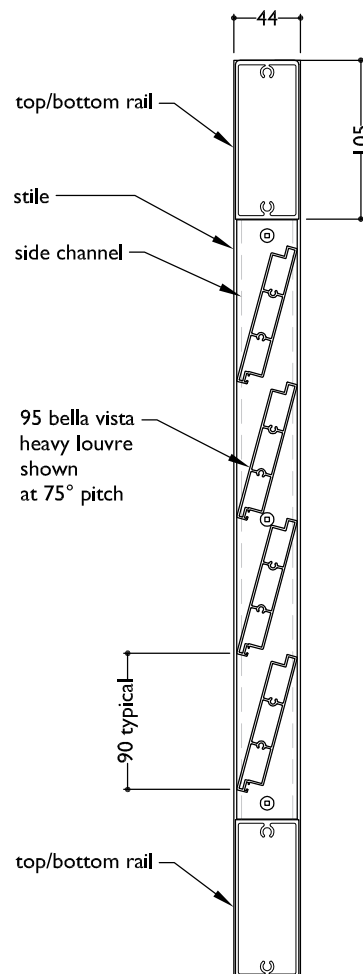
PLAN - END FIXED
95 BELLA VISTA HEAVY IN DOOR PANEL



SECTION
95 BELLA VISTA HEAVY KISS PIVOT IN DOOR PANEL



SECTION - END FIXED
95 BELLA VISTA HEAVY IN DOOR PANEL



note:
pitch(angle) and spacing of
louvres can vary and are
set at time of manufacture