

TECHNICAL DETAILS 600MM MAXI LOUVRE

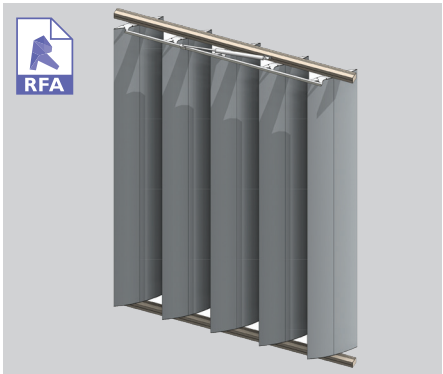


600MM MAXI LOUVRE

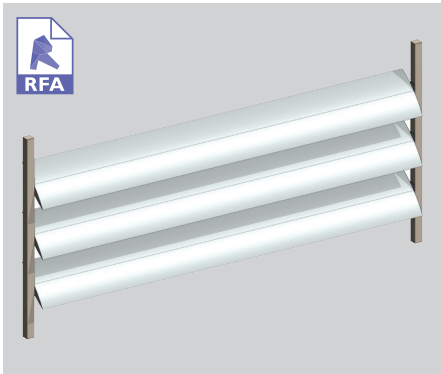
largest louvre

The 600mm Maxi Louvre is the largest louvre in the range and while primarily used in large spanning commercial projects it has also been specified for residential use. A current trend being larger louvres specified in a wider range of applications.

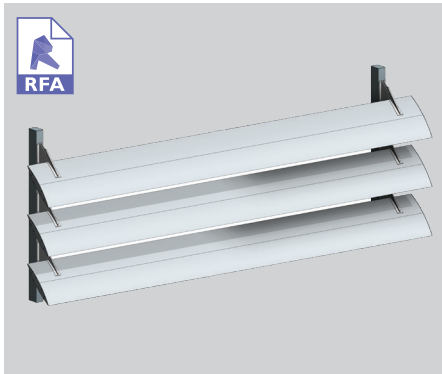
Available fully engineered motorised, end fixed or bracket fixed configurations.



600 MAXI LOUVRE - MOTORISED



END FIXED - VERTICAL PANEL



BRACKET FIXED - VERTICAL PANEL



BRACKET FIXED - VERTICAL PANEL

SURFACE COATINGS

A wide range of options are available.



ANODISED



WOOD FINISH



POWDERCOATED

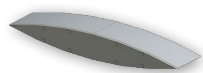
OPERATING THIS SUN LOUVRE - THE CHOICE IS YOURS

Fixed options

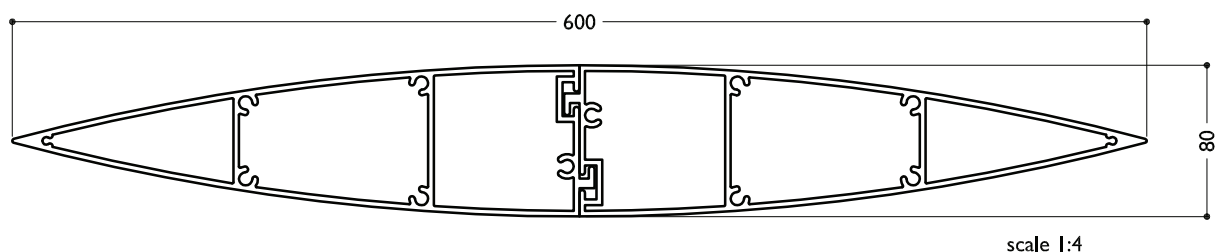
Operable systems



SUN LOUVRES - AIRFOIL SPECIFICATIONS



TECHNICAL DETAILS 600MM MAXI LOUVRE



BLADE SPECIFICATIONS			
Blade cover - opening system	588 mm	Weight per lineal metre	14.74 kg/lm
Weight per square metre - blades fixed @ 600mm	24.62 kg/sqm	Actual blade width	600 mm
Blade centres - opening system	588 mm		

WIND ZONE	INSIDE	LOW	MEDIUM	HIGH	VERY HIGH	EXTRA HIGH
Factored wind speed at building	Self wt	32 m/s 115 km/hr	37 m/s 133 km/hr	44 m/s 158 km/hr	50 m/s 179 km/hr	55 m/s 198 km/hr
Ultimate limit state loads (kPa)		+0.92 & -1.15	+1.23 & -1.53	+1.74 & -2.17	+2.24 & -2.80	+2.71 & -3.39
Fixed vertical & horizontal	5800	5800	5600	4700	4100	3700

INSTALLATION OPTIONS



END FIXED

Louvres at any pitch
Louvres at any centre



BRACKET FIXED

Louvres at any pitch
Louvres at any centre



MAXI-DRIVE PIVOT SYSTEM

Motorised

CALCULATE OPTIMUM FRAME OPENING SIZES

Width: Check engineering limits

Height: Calculation example showing 9 blades

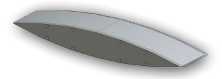
STEP 1

8 blades x 588	4704
1 blade at 600	600
9 blades	=5304

STEP 2

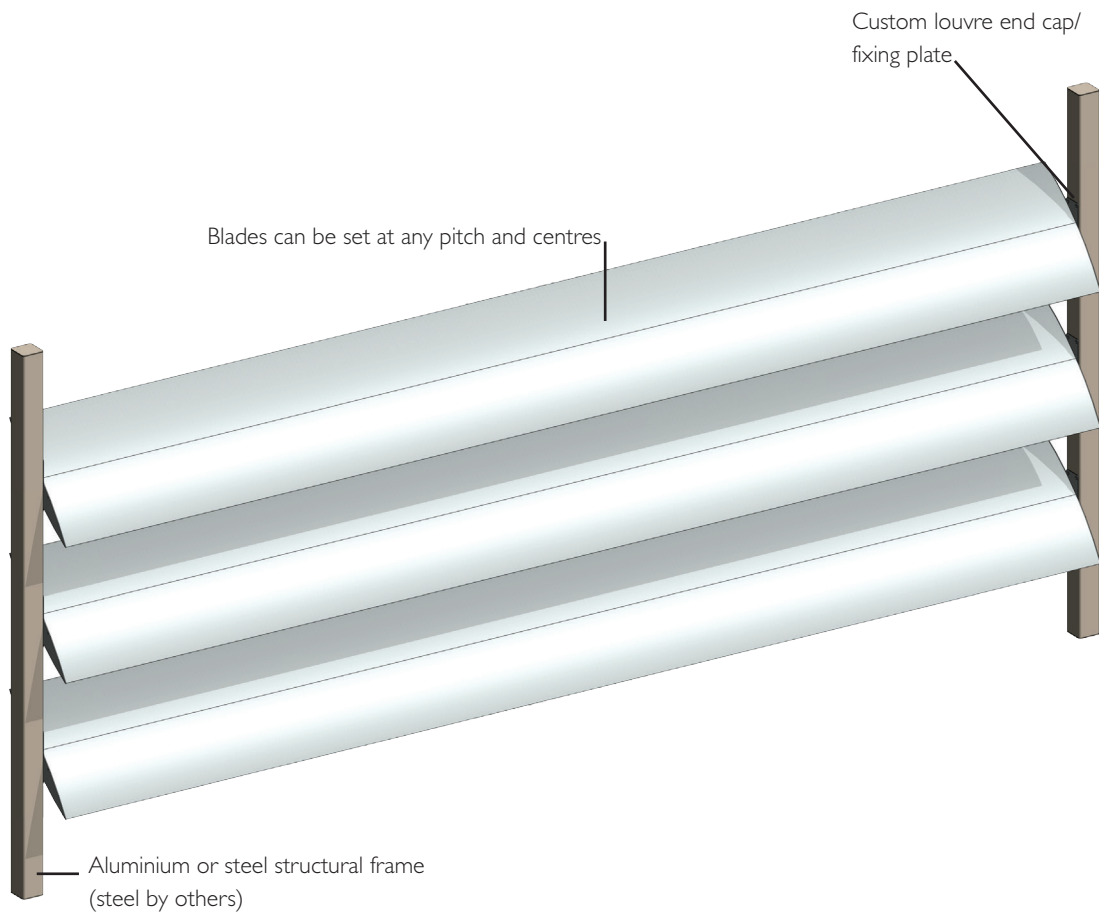
Blade cover	5304
+ top and bottom closing angles allow for	
5mm + 5mm	10
Total exact opening height	=5314*

*This is inside measure - not outer frame size.



TECHNICAL DETAILS 600MM MAXI LOUVRE END FIXED

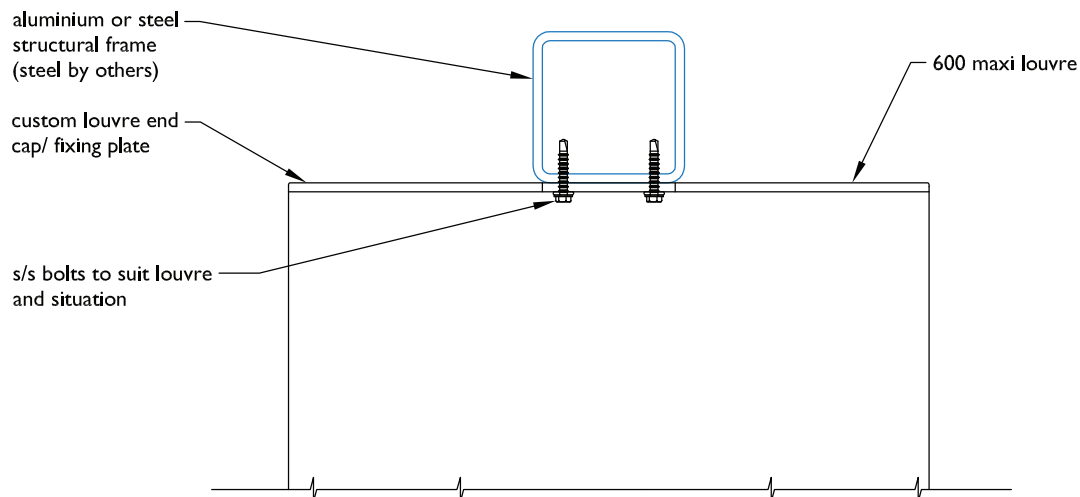
TYPICAL DETAIL 3D MODEL 600 MAXI LOUVRE END FIXED VERTICAL PANEL



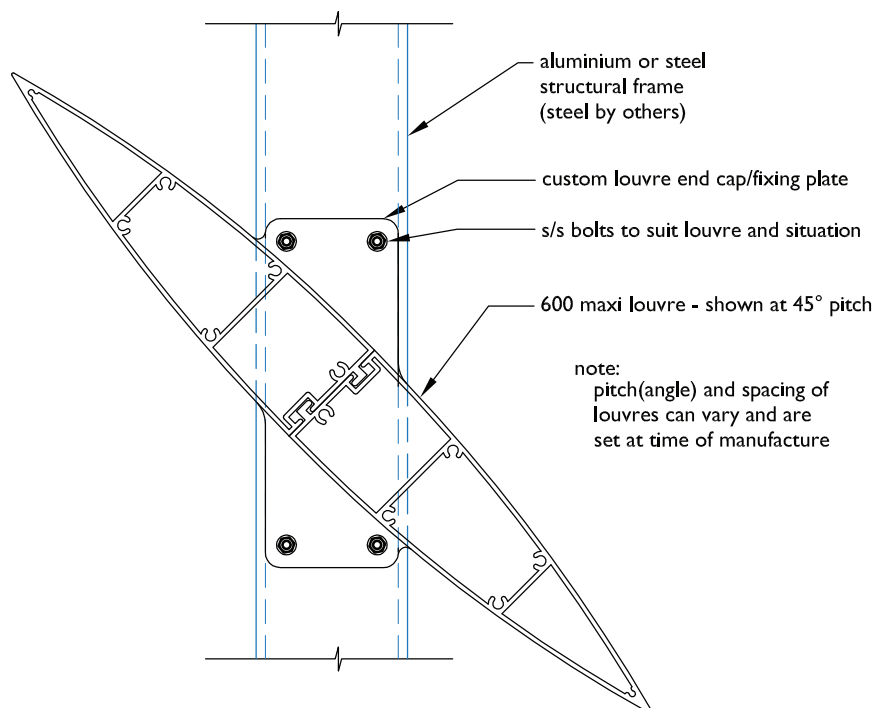
End fixed vertical panel - horizontal blades

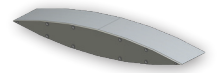
TYPICAL DETAIL : END FIXED 600MM MAXI LOUVRE

PLAN - END FIXED 600MM MAXI LOUVRE



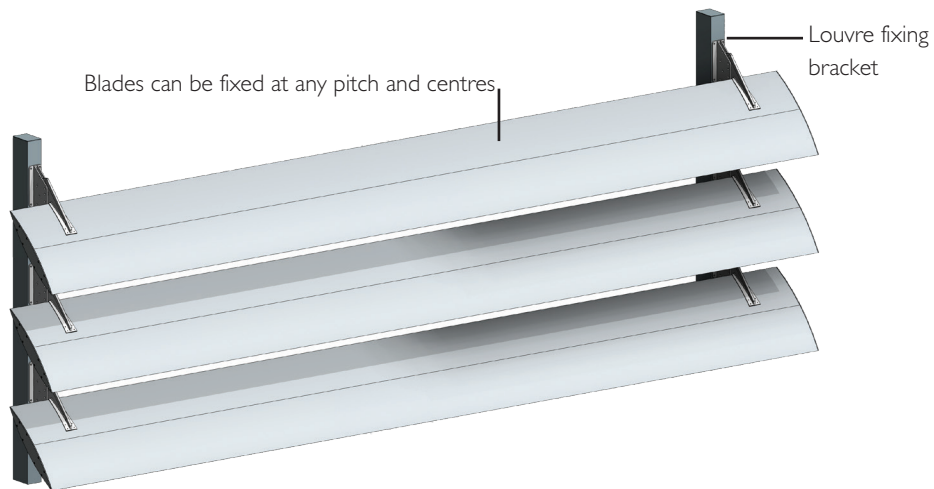
SECTION - END FIXED 600MM MAXI LOUVRE





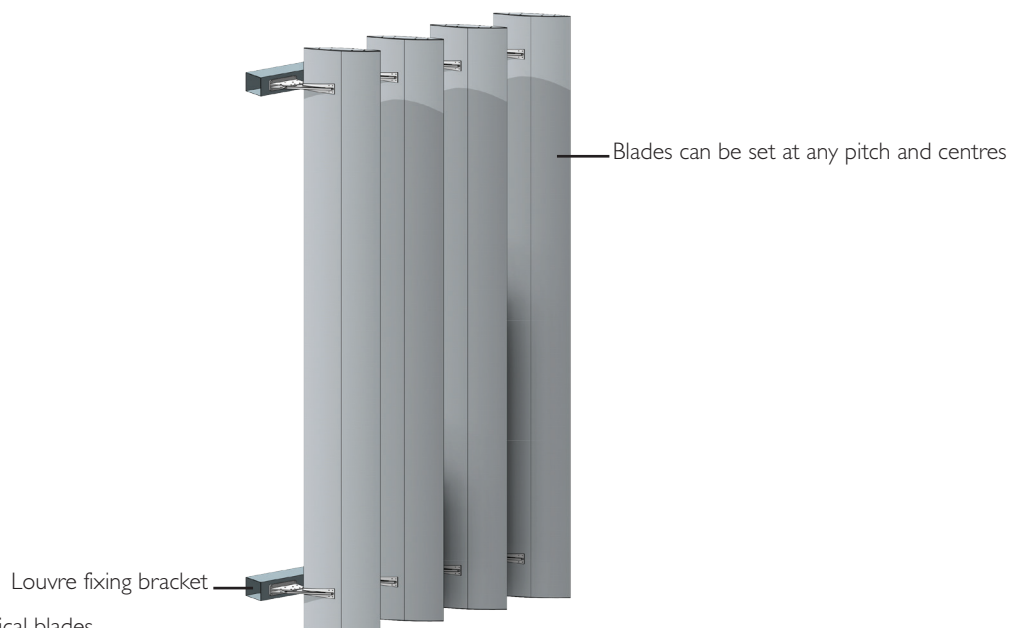
TECHNICAL DETAILS 600MM MAXI LOUVRE BRACKET FIXED

TYPICAL DETAIL 3D MODEL 600MM MAXI LOUVRE BRACKET FIXED VERTICAL PANEL - HORIZONTAL BLADES



Bracket fixed - horizontal blades

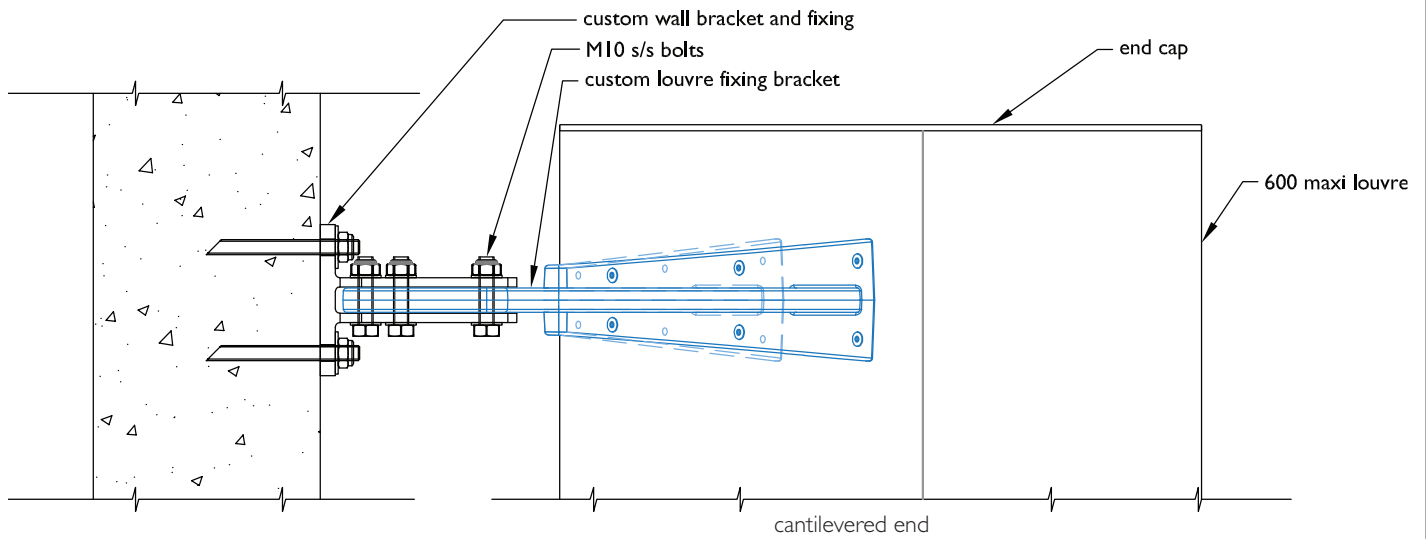
TYPICAL DETAIL 3D MODEL 600MM MAXI LOUVRE BRACKET FIXED VERTICAL PANEL - VERTICAL BLADES



Bracket fixed - vertical blades

TYPICAL DETAIL : BRACKET FIXED 600MM MAXI LOUVRE

PLAN - BRACKET FIXED 600MM MAXI LOUVRE



SECTION - BRACKET FIXED 600MM MAXI LOUVRE

