

TECHNICAL DETAILS 300MM AIRFOIL MAXI LOUVRE



300MM MAXI LOUVRE

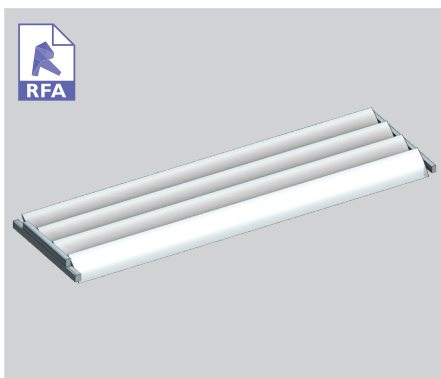
elliptical shape

The 300mm Maxi Louvre is now available in a motorised option using Louvretec's new Maxi-Drive pivot system.

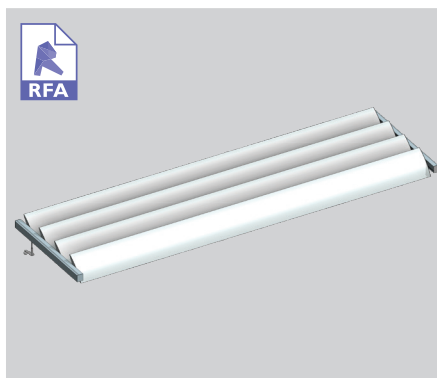
This new pivot system hides both the motor and pivot mechanism within a structural aluminium support frame.

Powered by Somfy, Maxi-Drive incorporates both a reduction gearbox and supporting drive arm, providing strength needed for pivoting large blade louvres. Ideal for both residential and commercial applications.

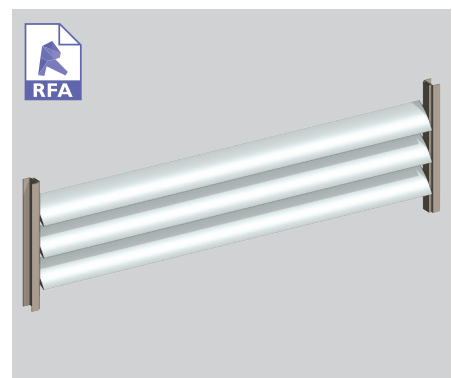
Also available as end or bracket fixed, horizontal or vertical overhead panels.



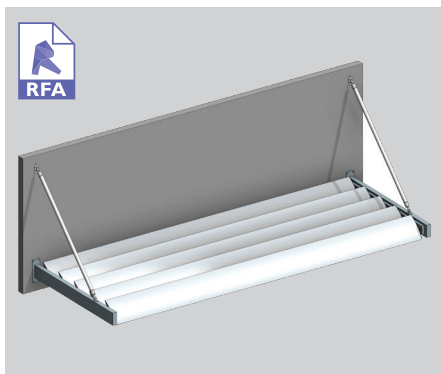
MOTORISED - 300 MAXI LOUVRE



HAND OPERABLE - 300 MAXI LOUVRE



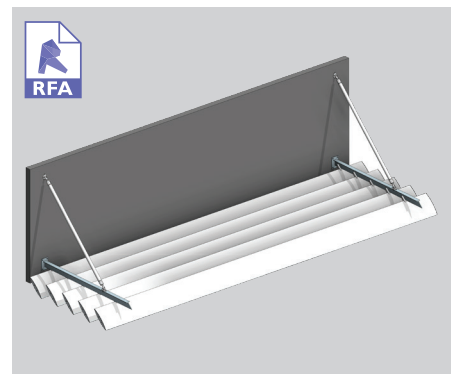
END FIXED - VERTICAL PANEL



END FIXED - OVERHEAD PANEL



BRACKET FIXED - VERTICAL PANEL



BRACKET FIXED - OVERHEAD PANEL

SURFACE COATINGS

A wide range of options are available.



ANODISED



WOOD FINISH



POWDERCOATED

OPERATING THIS SUN LOUVRE - THE CHOICE IS YOURS

Fixed options

Operable systems



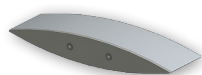
LOUVRETEC
GEARBOX



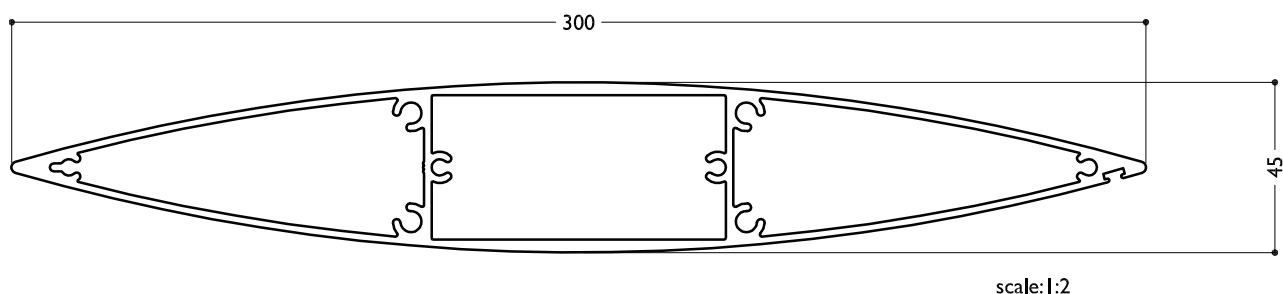
HOME MOTION by
somfy

MOTORS AND SENSORS

SUN LOUVRES - AIRFOIL SPECIFICATIONS



TECHNICAL DETAILS 300MM MAXI LOUVRE



BLADE SPECIFICATIONS			
Blade cover - opening system	288 mm	Weight per lineal metre	5.66 kgm
Weight per square metre - opening system	19.64 kg/sqm	Actual blade width	300 mm
Blade centres - opening system	288 mm		

SPANS AT A GLANCE NB Refer Engineering Section. Climate, terrain, shielding, location, type of structure contribute to determine spans.

WIND ZONE	INSIDE	LOW	MEDIUM	HIGH	VERY HIGH	EXTRA HIGH
Factored wind speed at building	Self wt	32 m/s 115 km/hr	37 m/s 133 km/hr	44 m/s 158 km/hr	50 m/s 179 km/hr	55 m/s 198 km/hr
Ultimate limit state loads (kPa)		+0.92 & -1.15	+1.23 & -1.53	+1.74 & -2.17	+2.24 & -2.80	+2.71 & -3.39
Adjustable and Fixed - horizontal & vertical	4800	4800	4800	4200	3700	3350

INSTALLATION OPTIONS



END FIXED

Louvres at any pitch
Louvres at any centre



BRACKET FIXED

Louvres at any pitch
Louvres at any centre



MAXI-DRIVE PIVOT SYSTEM

CALCULATE OPTIMUM FRAME OPENING SIZES

Width: Check engineering limits
Height: Calculation example showing 17 blades

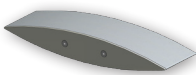
STEP 1

16 blades x 288	4608
1 blade at 300	300
17 blades	=4908

STEP 2

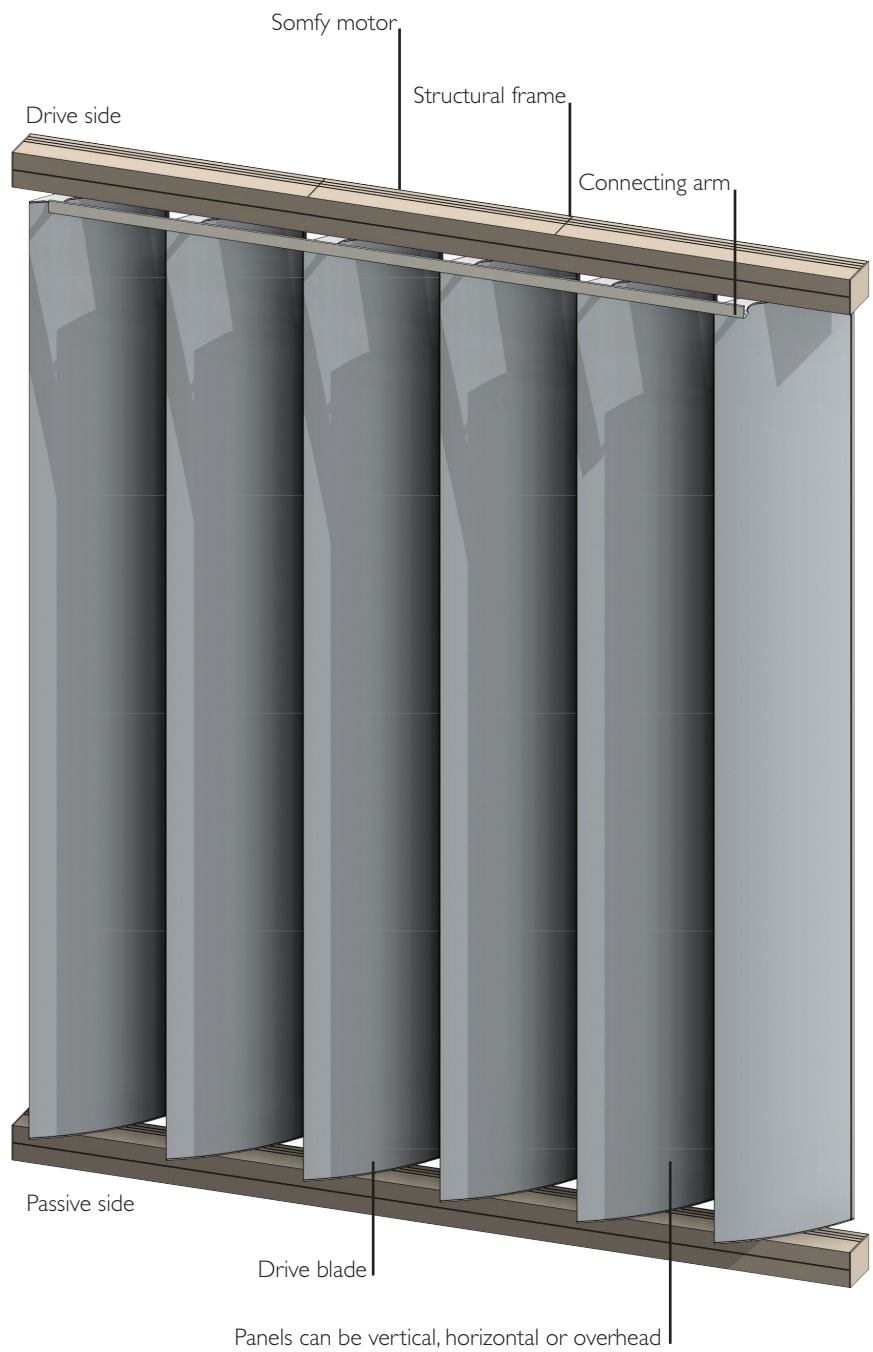
Blade cover	4908
+ top and bottom closing angles allow for	
5mm + 5mm	10
Total exact opening height	=4918*

*This is inside measure - not outer frame size.



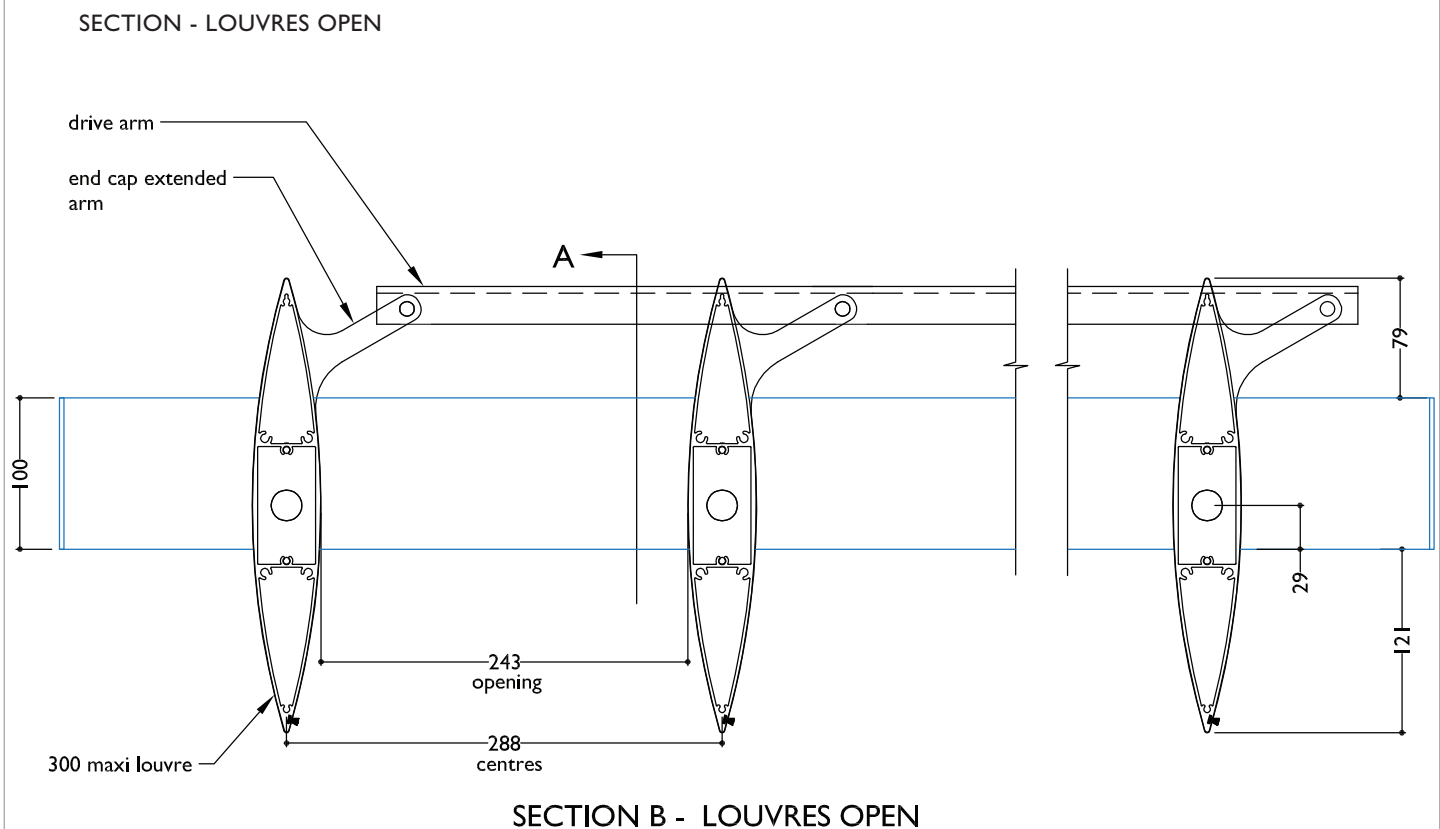
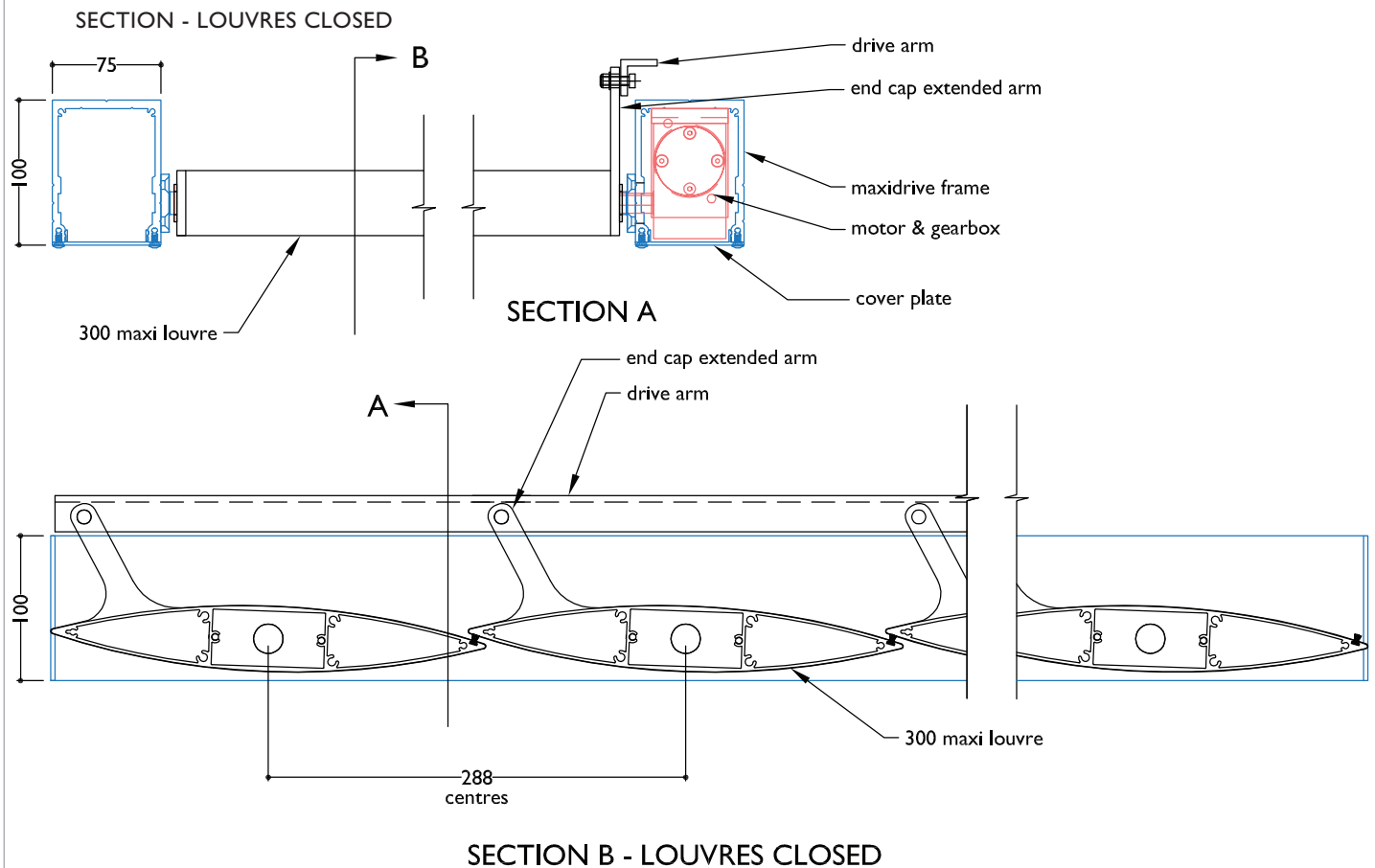
TECHNICAL DETAILS 300MM MAXI DRIVE PIVOT SYSTEM

TYPICAL DETAIL 3D MODEL 300MM MAXI DRIVE MOTORISED

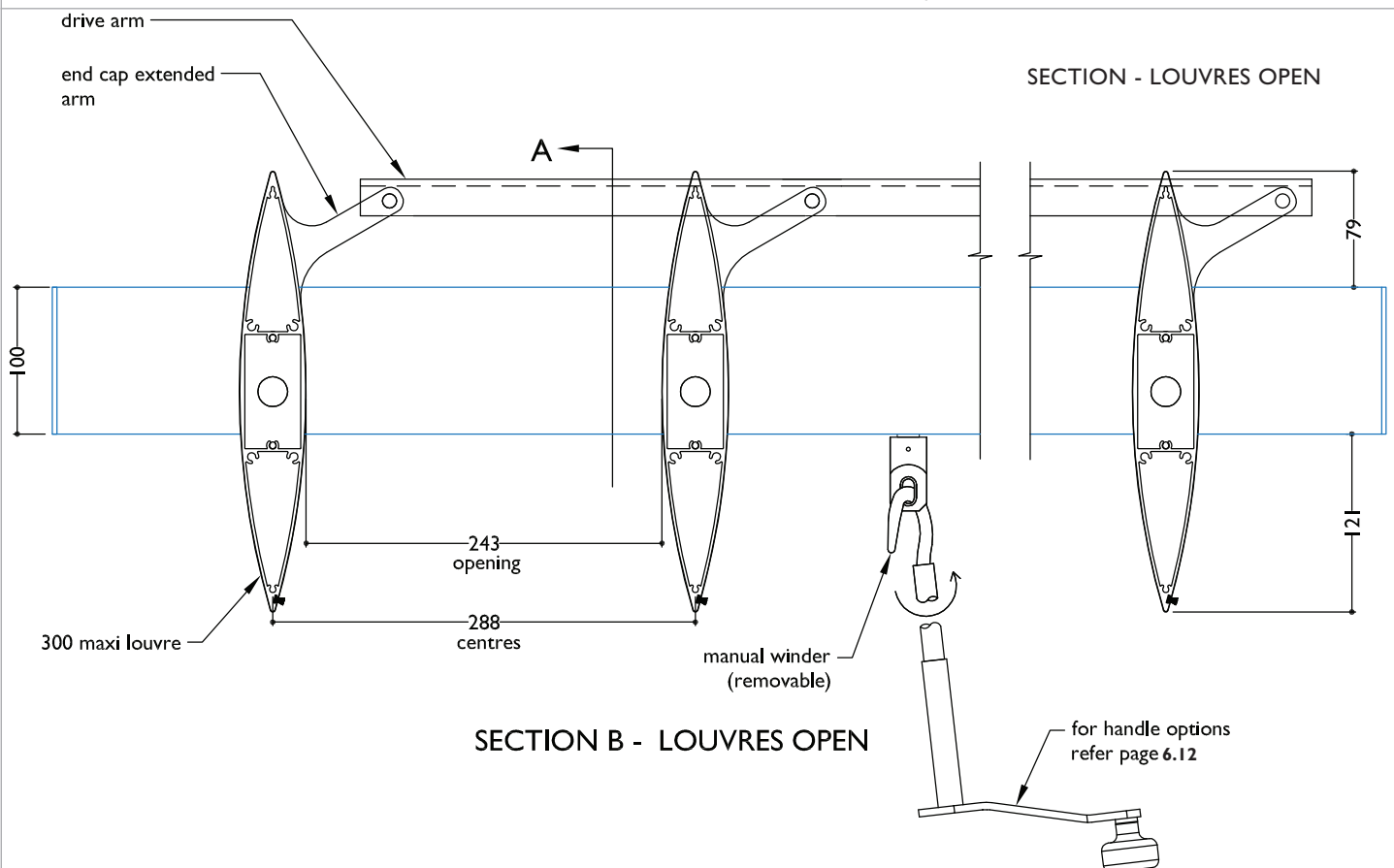
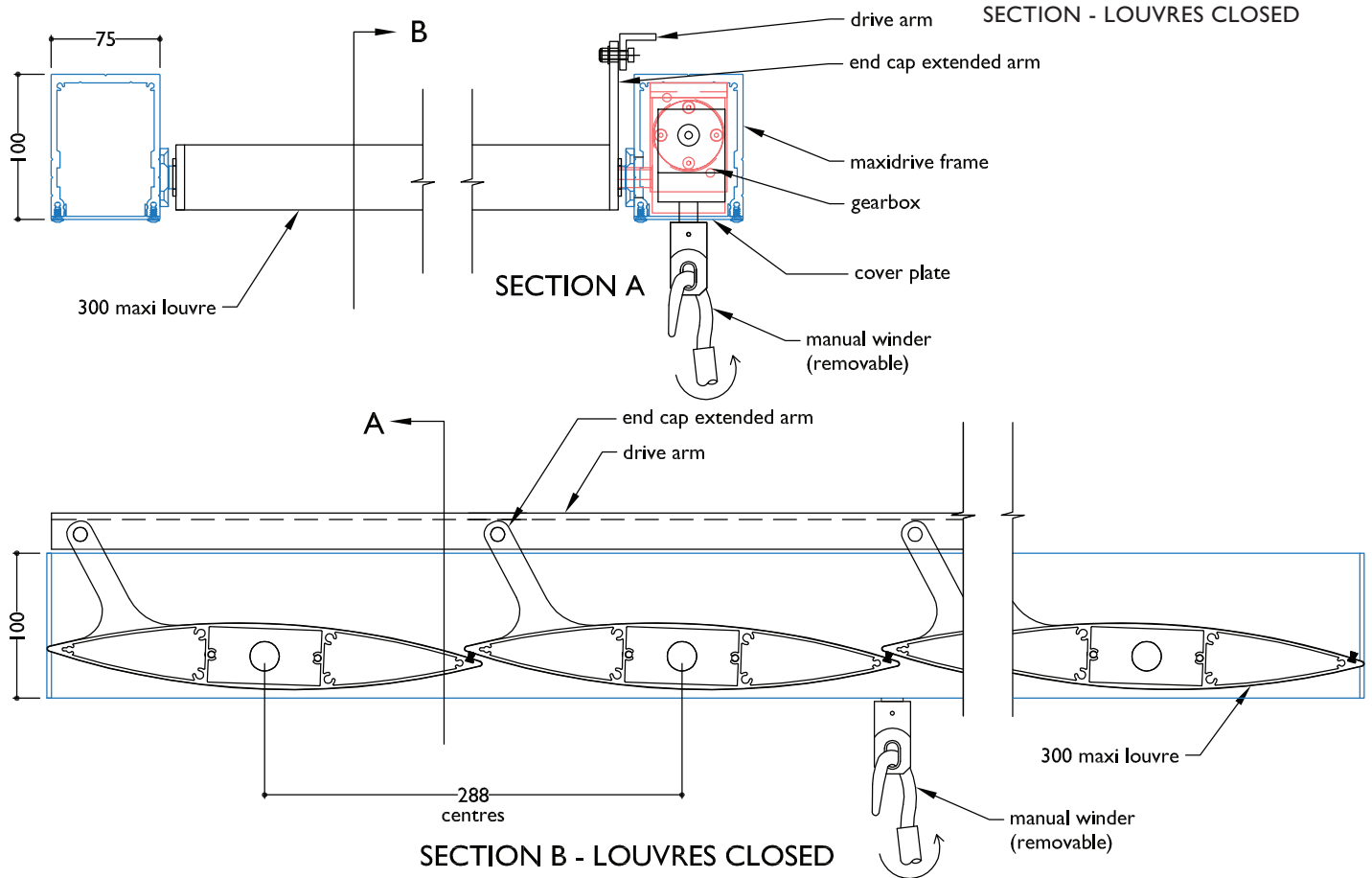


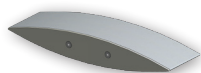
Vertical motorised panel

TYPICAL DETAIL : 300MM MAXI-DRIVE MOTORISED



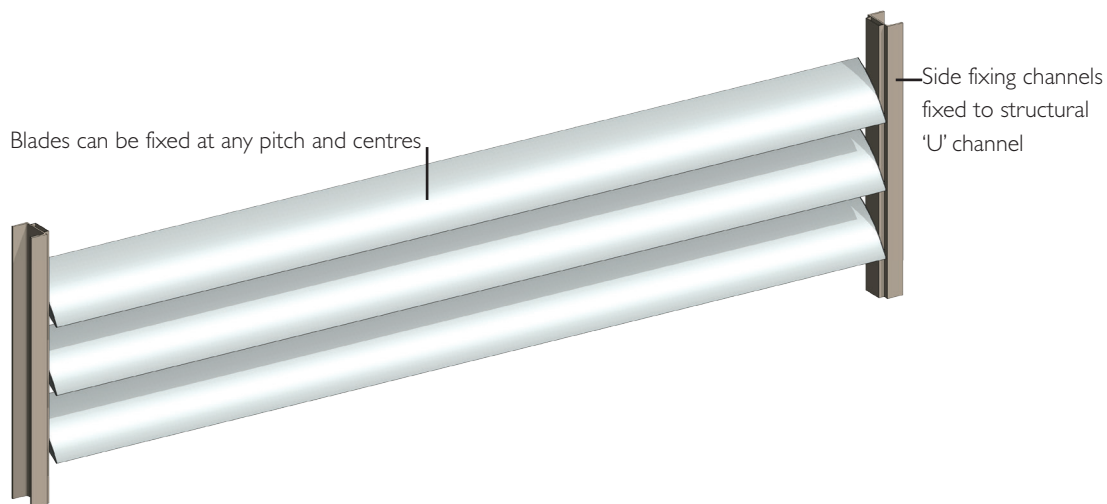
TYPICAL DETAIL : 300MM MAXI-DRIVE HAND OPERABLE





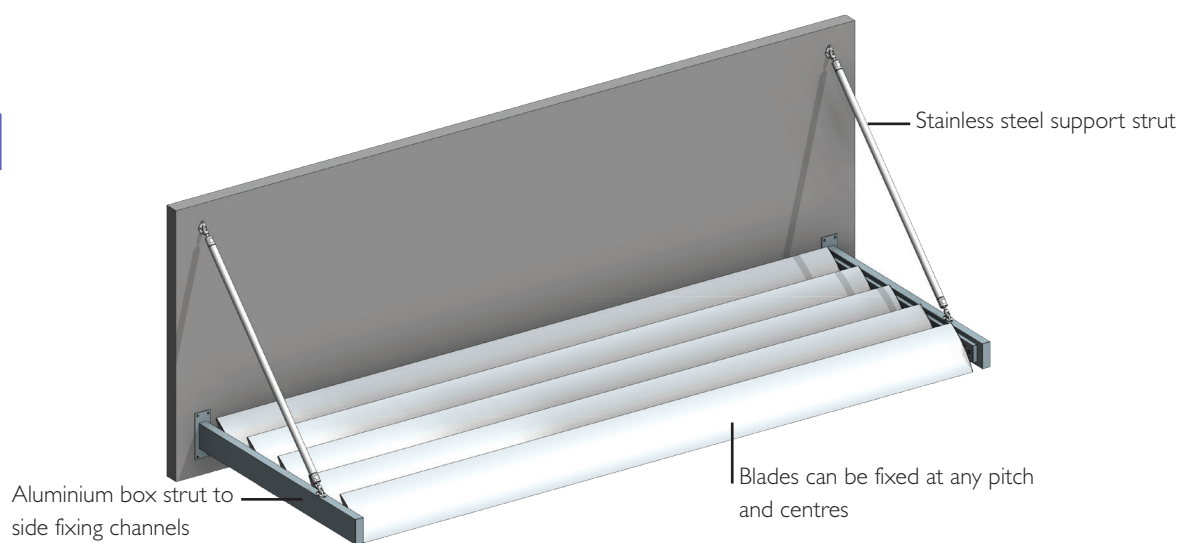
TECHNICAL DETAILS 300MM MAXI LOUVRE END FIXED

TYPICAL DETAIL 3D MODEL 300MM MAXI LOUVRE END FIXED VERTICAL PANEL



End fixed vertical panel

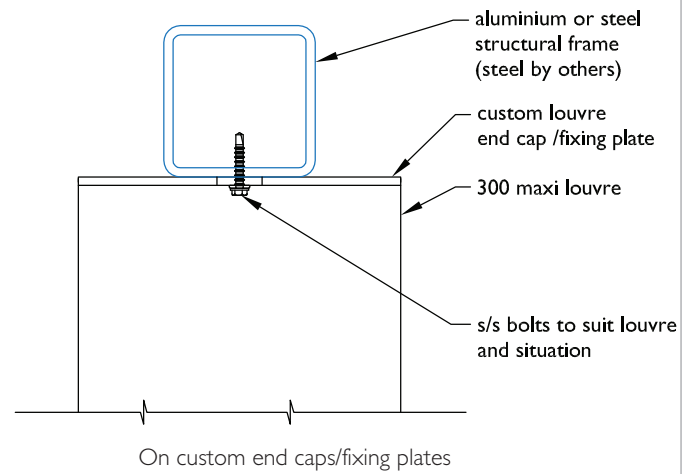
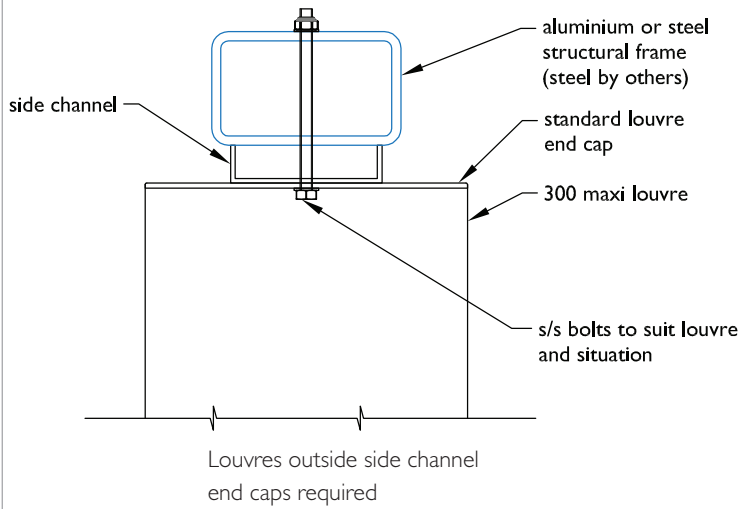
TYPICAL DETAIL 3D MODEL 300MM MAXI LOUVRE END FIXED OVERHEAD PANEL



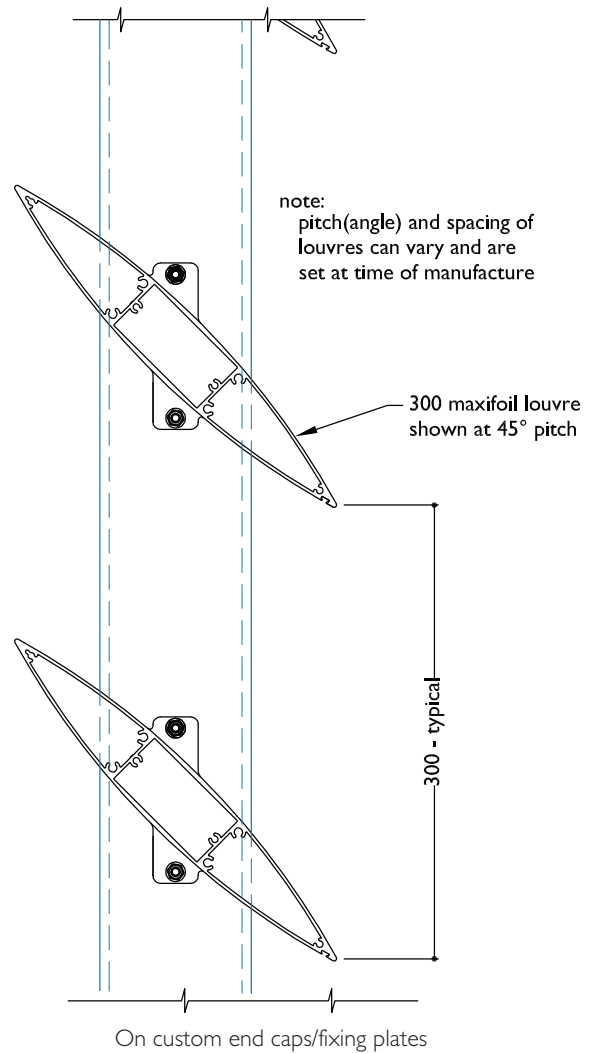
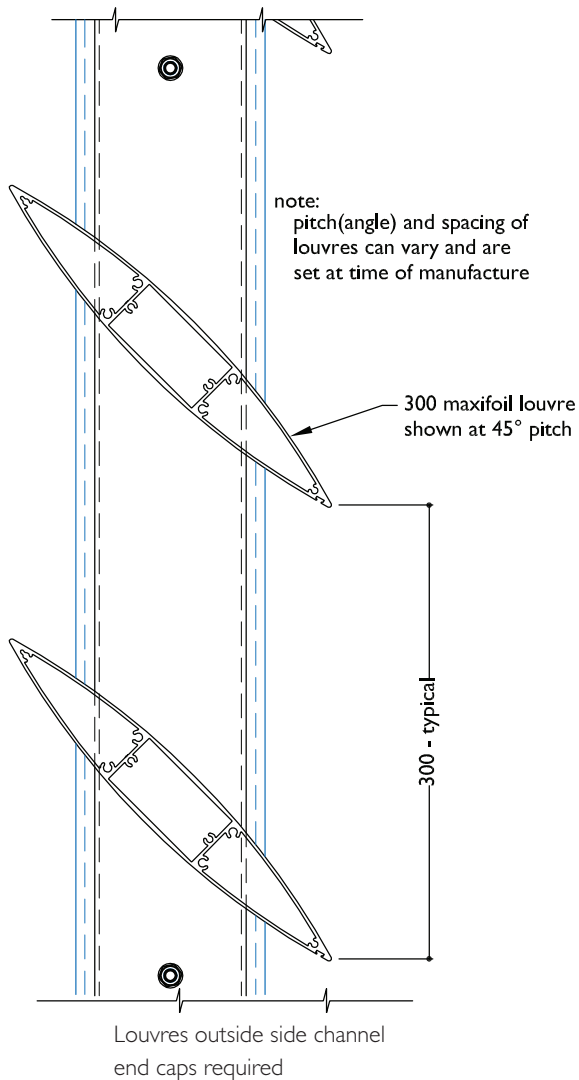
End fixed overhead panel

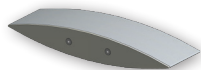
TYPICAL DETAIL : END FIXED 300MM MAXI LOUVRE PANELS

PLAN - END FIXED 300MM MAXI LOUVRE



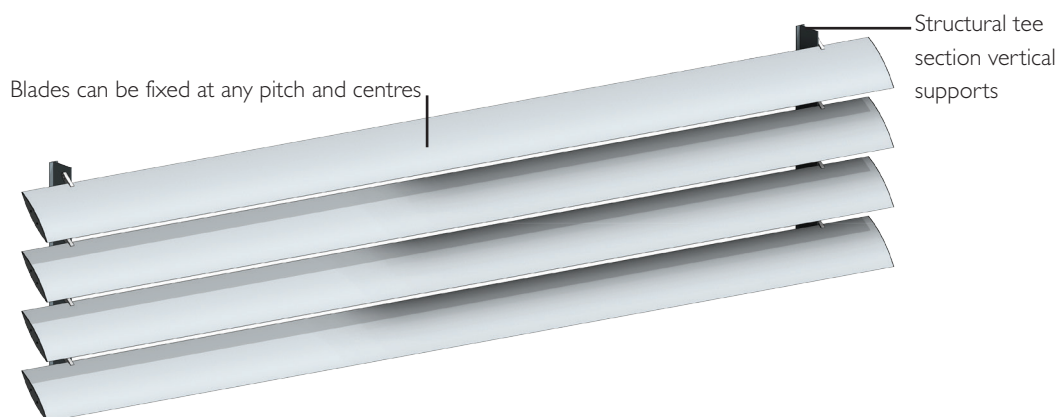
SECTION - END FIXED 300MM MAXI LOUVRES





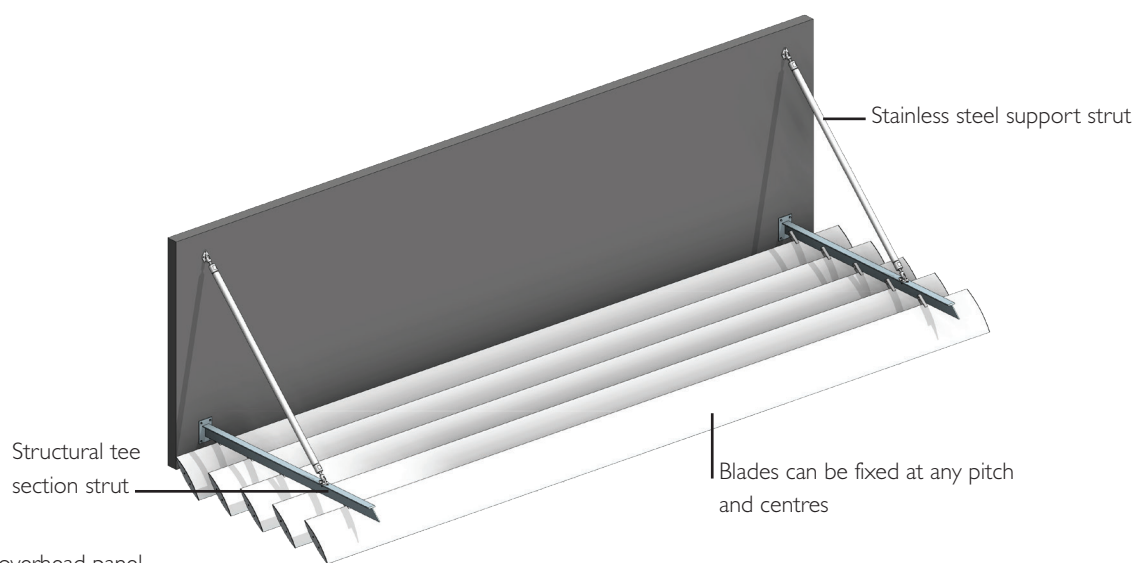
TECHNICAL DETAILS 300MM MAXI LOUVRE BRACKET FIXED

TYPICAL DETAIL 3D MODEL 300MM MAXI LOUVRE BRACKET FIXED VERTICAL PANEL



Bracket fixed vertical panel

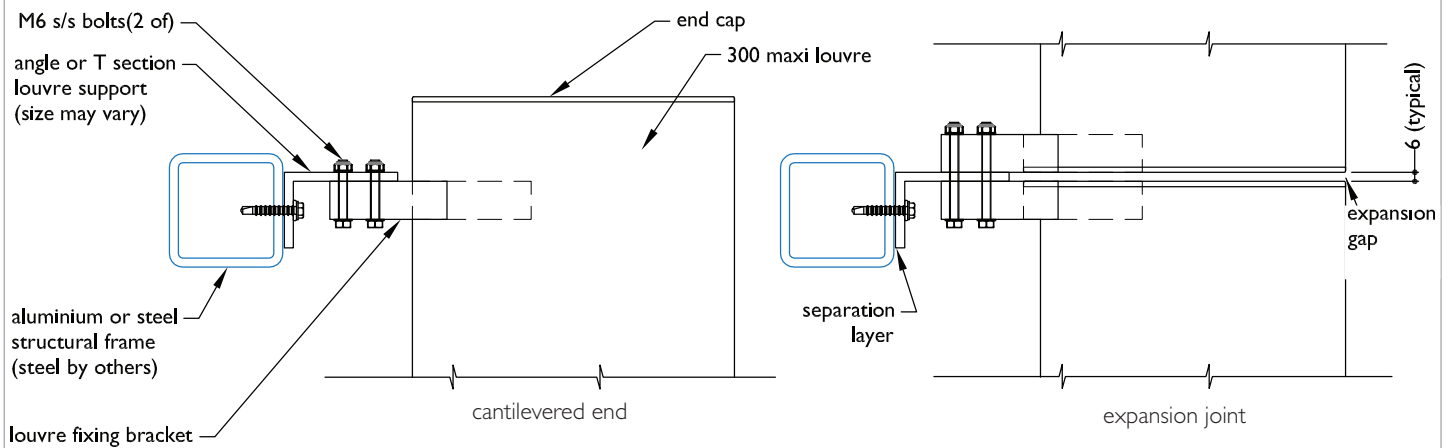
TYPICAL DETAIL 3D MODEL 300MM MAXI LOUVRE BRACKET FIXED OVERHEAD PANEL



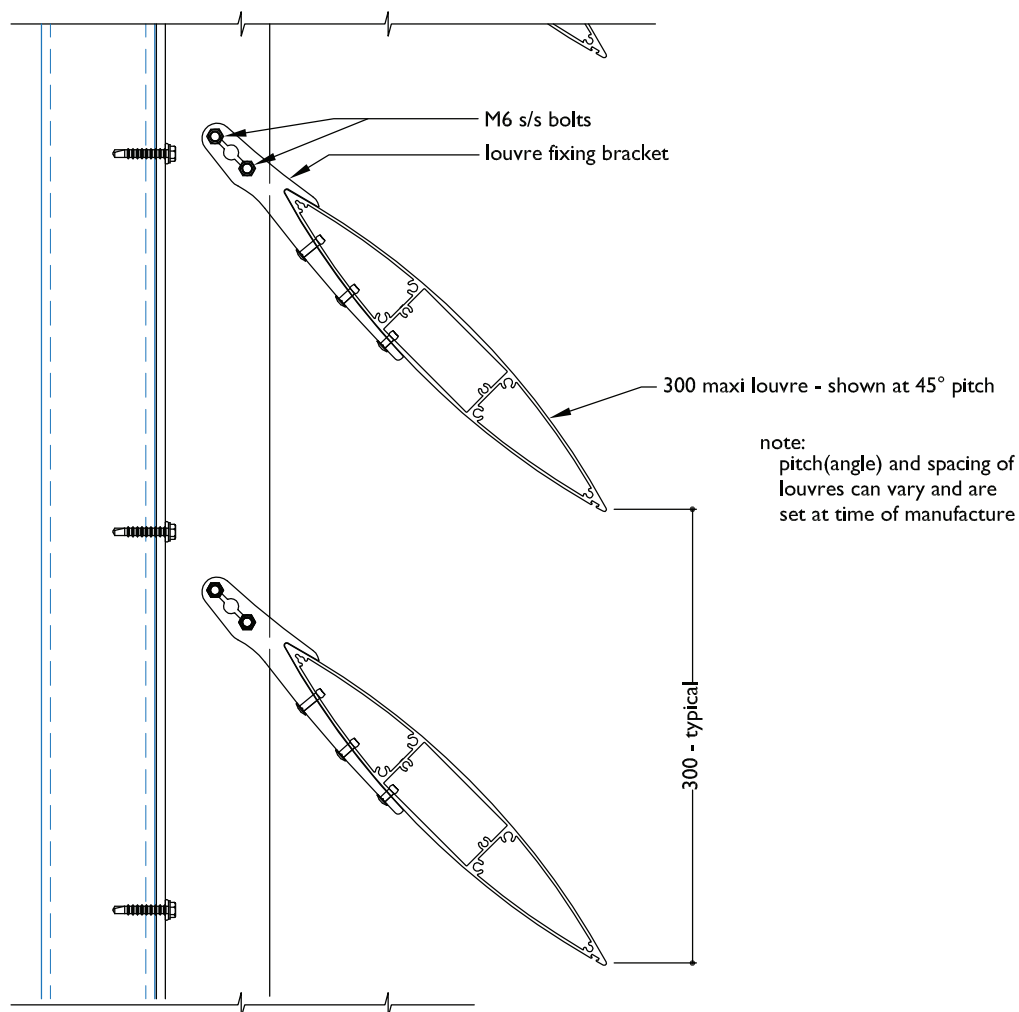
End fixed overhead panel

TYPICAL DETAIL : BRACKET FIXED 300MM MAXI LOUVRE PANELS

PLAN - BRACKET FIXED 300MM MAXI LOUVRE

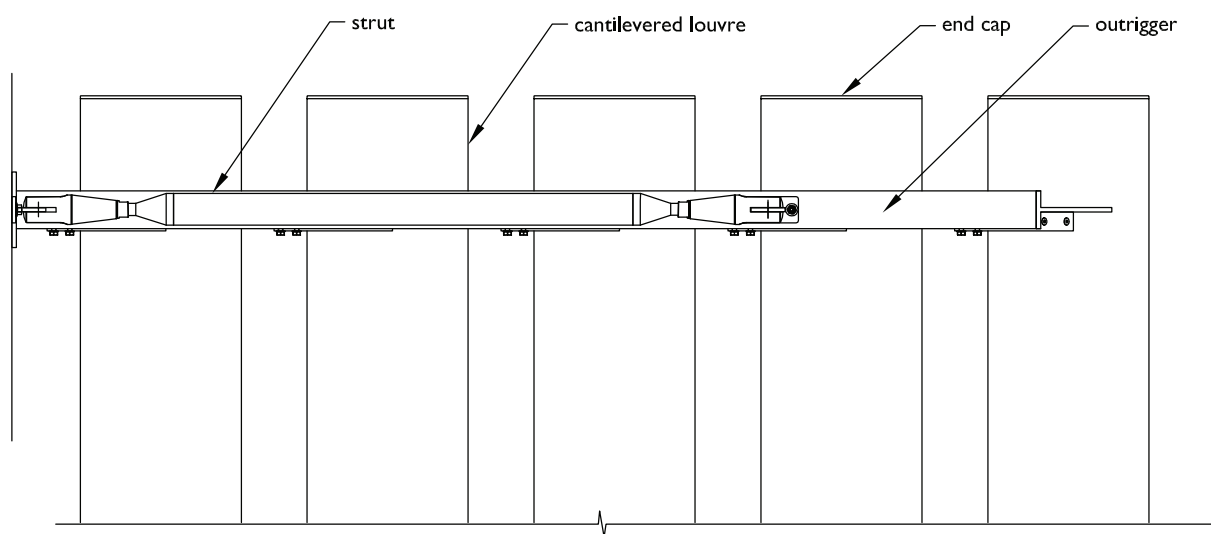


SECTION - BRACKET FIXED 300MM MAXI LOUVRE



TYPICAL DETAIL : BRACKET FIXED 300MM MAXI LOUVRE - EYEBROW CONFIGURATION

PLAN - BRACKET FIXED 300MM MAXI LOUVRE - EYEBROW



SECTION - BRACKET FIXED 300MM MAXI LOUVRE - EYEBROW CONFIGURATION

