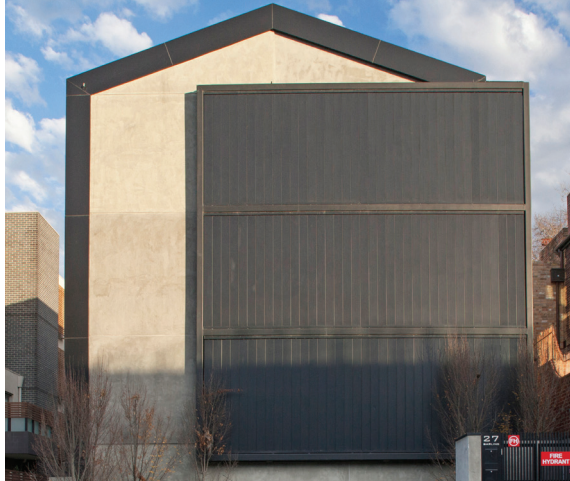


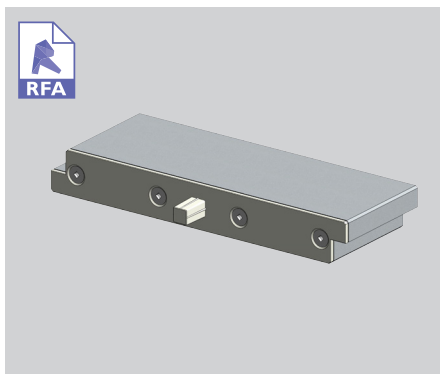
PRODUCT OVERVIEW 200MM FLUSH PANEL



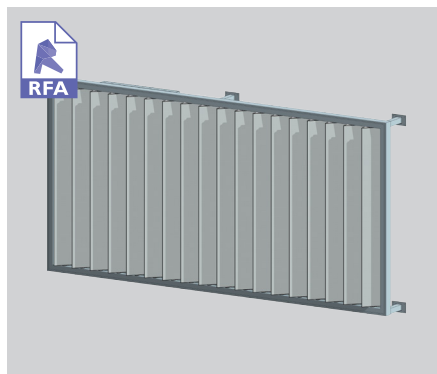
200MM FLUSH PANEL

wall panel / sun louvre / balustrade

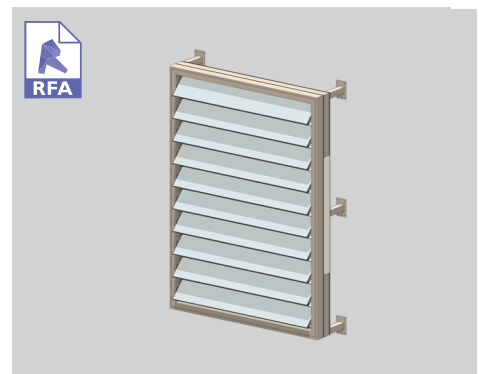
The 200mm Flush Panel louvre system is available as Spiral Pivot motorised or hand operable providing a fully flush operable opening wall. Blades can be run vertically or horizontally. Each blade closes on to a woolpile strip. The triple box section design provides good spans both vertically and horizontally. The slim 200mm blades are only 27mm deep giving over 165mm clear space when opened. Choose either centre of blade or rear pivot options. Rear pivot allows for close fitting alongside aluminium window and door joinery.



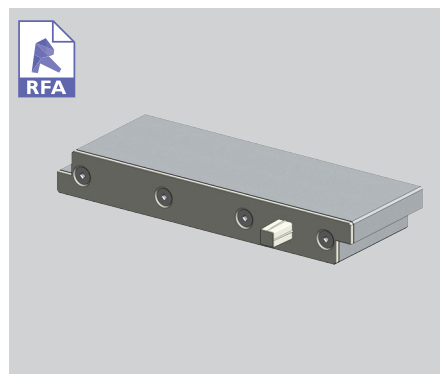
200 FLUSH PANEL CENTRE PIVOT



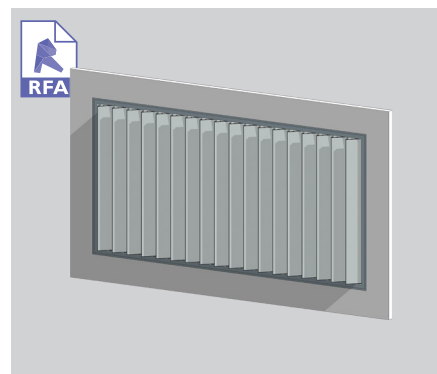
ELAM STREET FRAME - VERTICAL MOTORISED



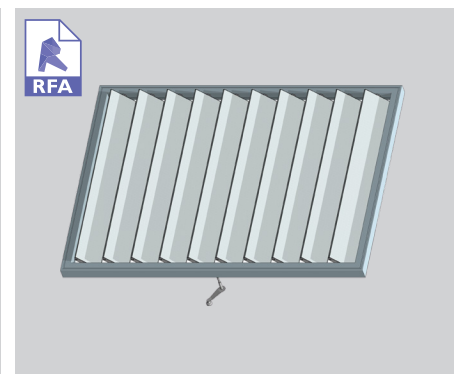
SUPER ELAM STREET FRAME - HORIZONTAL



200 FLUSH PANEL REAR PIVOT



SUPER ELAM STREET FRAME WITH SUB FRAME - VERTICAL MOTORISED



ELAM STREET FRAME - VERTICAL HAND OPERATED

SURFACE COATINGS

A wide range of options are available.



ANODISED



WOOD FINISH



POWDERCOATED

OPERATING THIS SUN LOUVRE - THE CHOICE IS YOURS

Fixed options

Operable systems

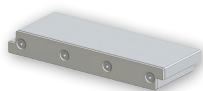


LOUVRETEC
GEARBOX

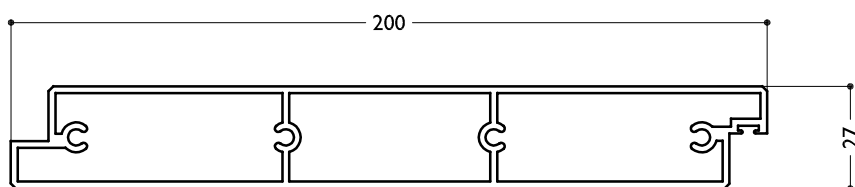


MOTORS AND SENSORS

SUN LOUVRES - RECTANGULAR SPECIFICATIONS



TECHNICAL DETAILS 200MM FLUSH PANEL



scale 1:2

BLADE SPECIFICATIONS			
Blade cover - opening system	192 mm	Weight per lineal metre	2.67 kg/lm
Weight per square metre - opening system	13.95 kg/sqm	Actual blade width	200 mm
Blade Centres - opening system	192 mm		

SPANS AT A GLANCE NB Refer Engineering Section. Climate, terrain, shielding, location, type of structure contribute to determine spans.

WIND ZONE	INSIDE	LOW	MEDIUM	HIGH	VERY HIGH	EXTRA HIGH
Factored wind speed at building		32m/s 115km/hr	37m/s 133km/hr	44m/s 158km/hr	50m/s 179km/hr	55m/s 198km/hr
Ultimate limit state loads (kPa)		+0.92 & -1.15	+1.23 & -1.53	+1.74 & -2.17	+2.24 & -2.80	+2.71 & -3.39
Adjustable and Fixed Horizontal and Vertical	3500	3350	3000	2650	2450	2250

INSTALLATION OPTIONS



CALCULATE OPTIMUM SIZE & FRAME BOTH SIDES

Width: Check engineering limits
Heigh: Calculation example showing
17 blades

STEP 1

16 blades x 192crs	3072
1 blade at 200mm	200
17 blades	=3272

STEP 2

Blade cover	3272
+ top and bottom closing angles allow for	
5mm + 5mm clearance @ ends 10	
Total exact opening height	=3282



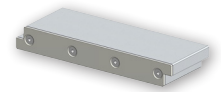
END FIXED

Louvres at any pitch
Louvres at any centre



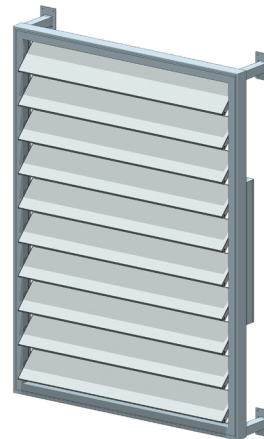
BRACKET FIXED

Louvres at any pitch
Louvres at any centre



PRODUCT DETAILS 200MM FLUSH PANEL SPIRAL PIVOT

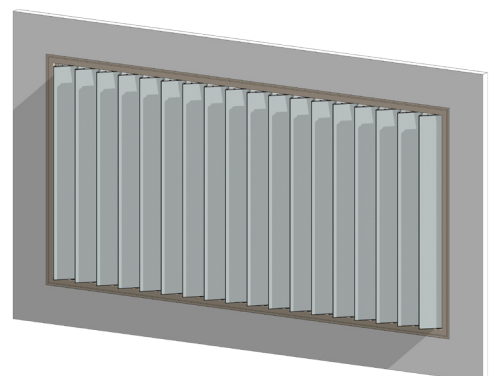
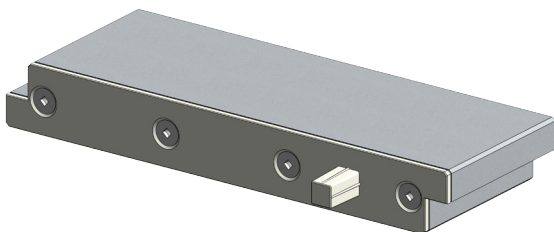
TYPICAL DETAIL 3D MODELS 200 FLUSH PANEL MOTORISED SPIRAL PIVOT LOUVRES - CENTRE PIVOT



200 flush panel - centre pivot

Elam Street vertical panel, horizontal blades

TYPICAL DETAIL 3D MODELS 200 FLUSH PANEL MOTORISED SPIRAL PIVOT LOUVRES - REAR PIVOT

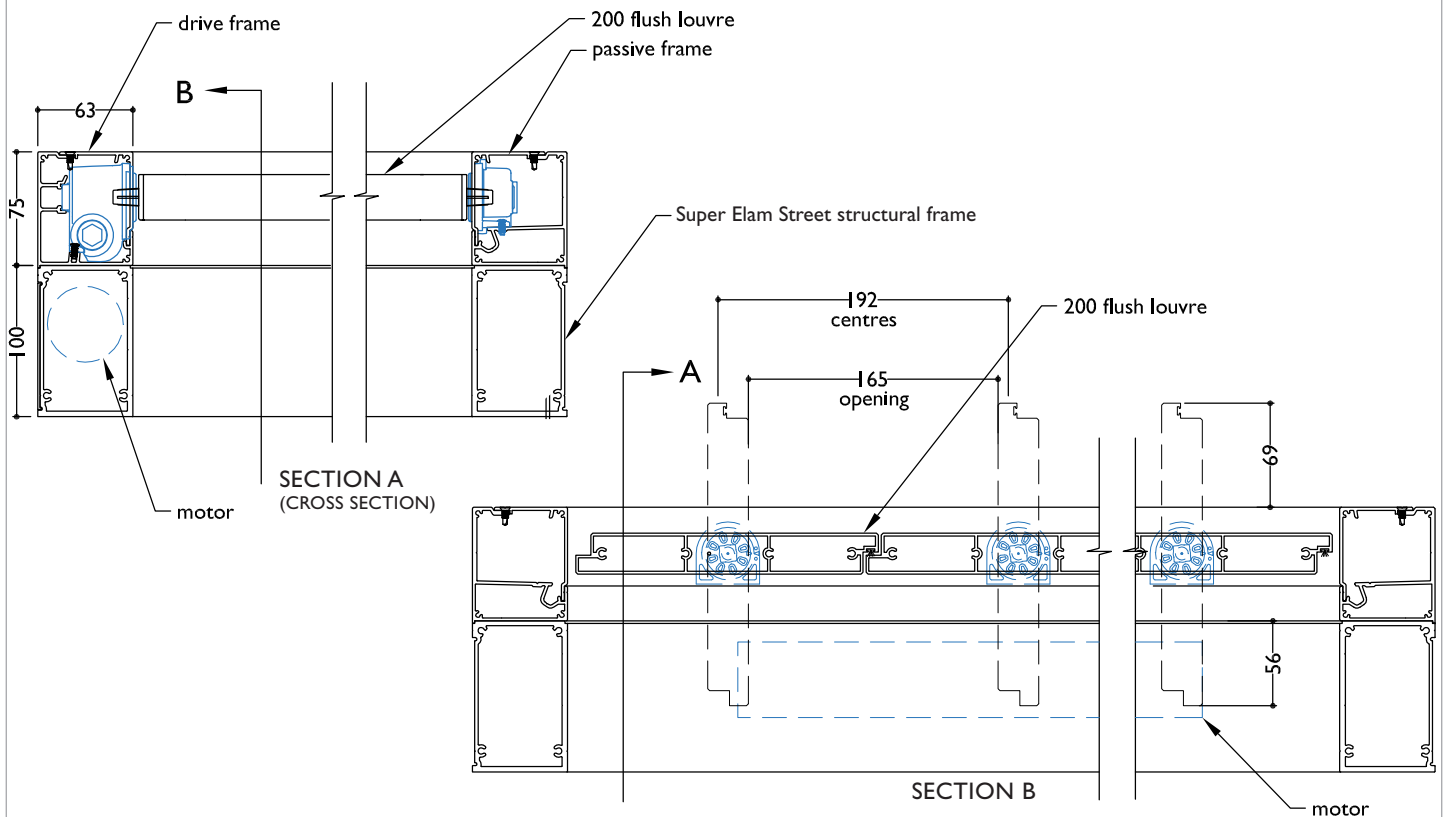


200 flush panel - rear pivot

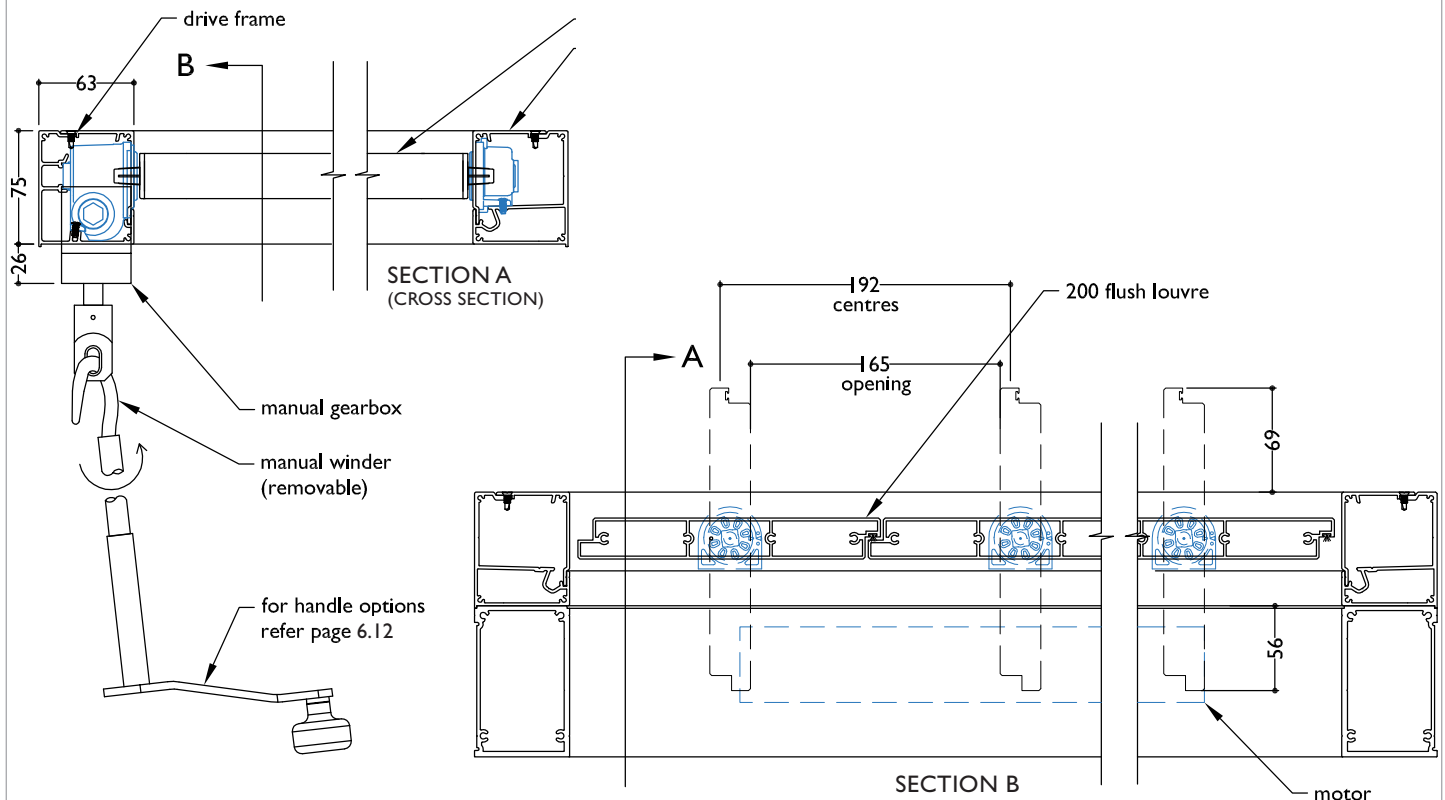
Super Elam Street with sub frame vertical panel.
vertical blades
note: rear pivot louvres can only be used as vertical blades

TYPICAL DETAIL : 200MM FLUSH PANEL - CENTRE PIVOT

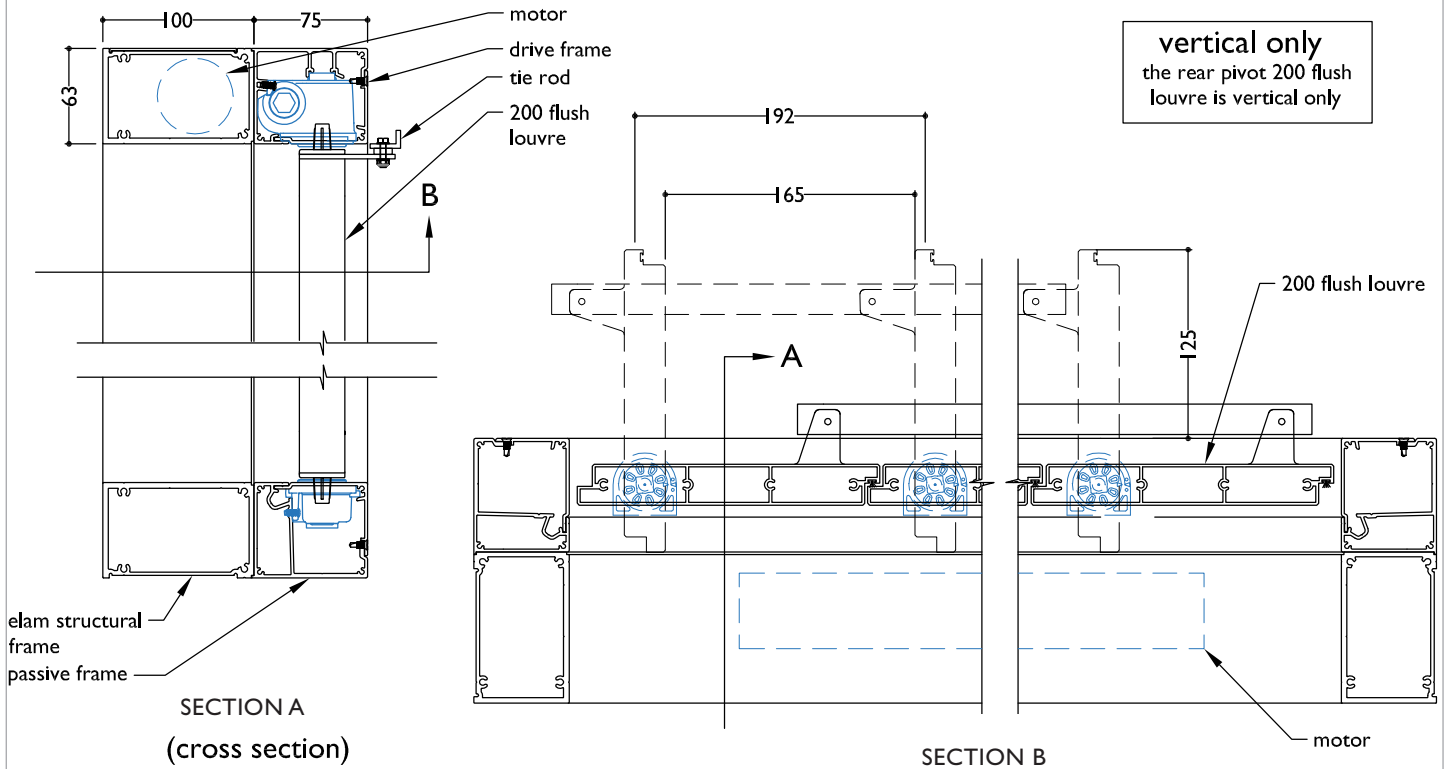
SECTION - CENTRE PIVOT MOTORISED 200 FLUSH LOUVRE SPIRAL PIVOT ON SUPER ELAM STREET STRUCTURAL FRAME WITH SUB FRAME



SECTION - CENTRE PIVOT MANUALLY OPERABLE 200 FLUSH LOUVRE SPIRAL PIVOT



SECTION - REAR PIVOT MOTORISED 200 FLUSH LOUVRE SPIRAL PIVOT ON SUPER ELAM STREET STRUCTURAL FRAME WITH SUB FRAME



SECTION - REAR PIVOT MANUALLY OPERABLE 200 FLUSH LOUVRE SPIRAL

