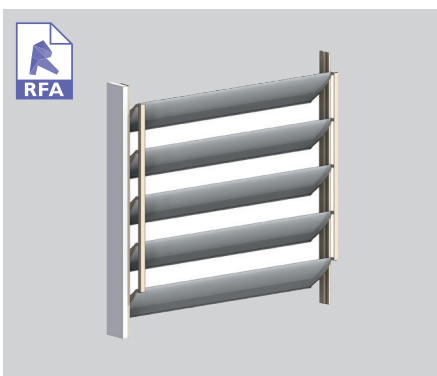


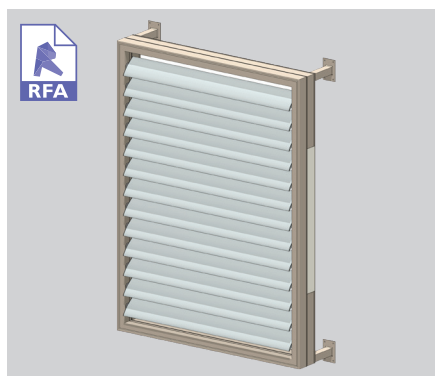
150MM MIDI LOUVRE

wave shape

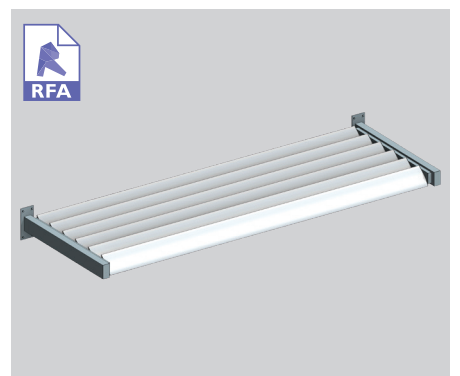
The 150mm Midi is the largest of the 'wave' shape group of louvres. The wider blade spans well and is ideal for closing off decks and verandah spaces. This versatile louvre is available in both Spiral (motorised and hand operable) and KISS (hand adjustable) Pivot systems. KISS Pivot louvres are hand operated and can be locked closed and in various opened positions. A woolpile closing insert ensures a snug fit when closed. This blade is well suited fixed within an opening or within sliding, bifolding or hinged doors. Also available end and bracket fixed.



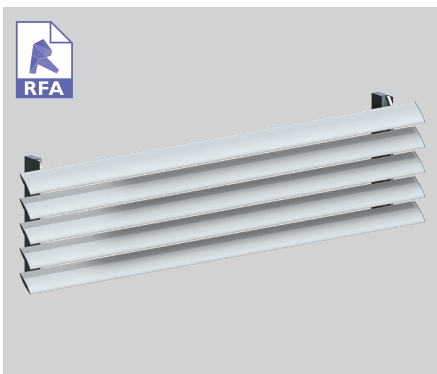
150MM KISS PIVOT



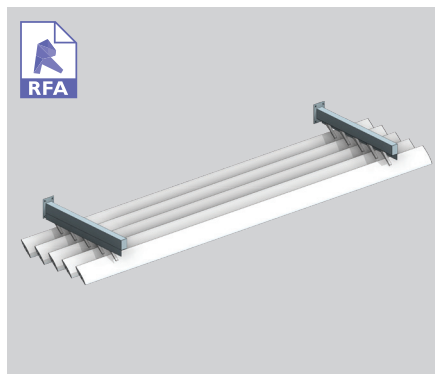
150MM SPIRAL PIVOT



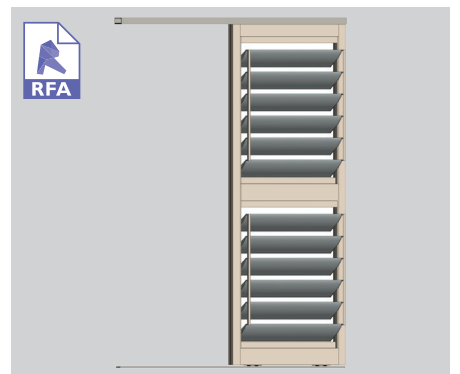
150MM END FIXED OVERHEAD



150MM BRACKET FIXED VERTICAL



150MM BRACKET FIXED OVERHEAD



150MM KISS PIVOT SLIDING DOOR

SURFACE COATINGS

A wide range of options are available.



ANODISED



WOOD FINISH



POWDERCOATED

OPERATING THIS SUN LOUVRE - THE CHOICE IS YOURS

Fixed options

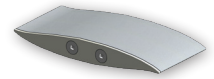
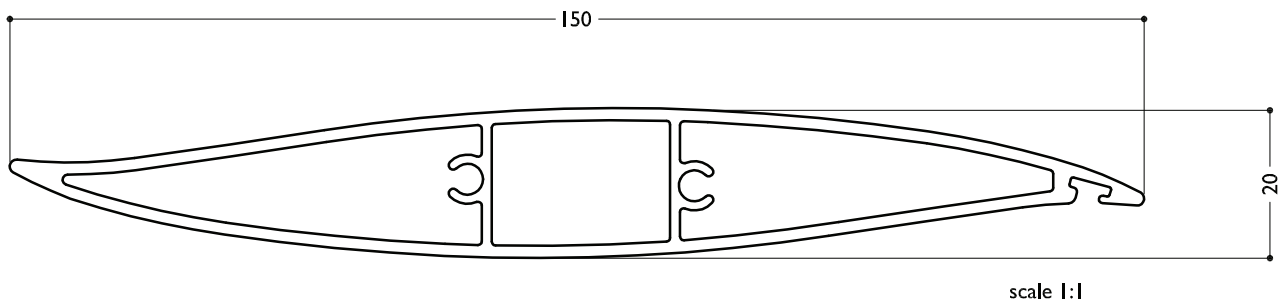
Operable systems



LOUVRETEC GEARBOX



MOTORS AND SENSORS

**TECHNICAL DETAILS** 150MM MIDI LOUVRE

BLADE SPECIFICATIONS			
Blade cover - opening system	138 mm	Weight per lineal metre	1.47 kg/lm
Weight per square metre - opening system	10.7 kg/sqm	Actual blade width	150 mm
Blade Centres - opening system	138 mm		

SPANS AT A GLANCE NB Refer Engineering Section. Climate, terrain, shielding, location, type of structure contribute to determine spans.

WIND ZONE	INSIDE	LOW	MEDIUM	HIGH	VERY HIGH	EXTRA HIGH
Factored wind speed at building	Self wt	32 m/s 115 km/hr	37 m/s 133 km/hr	44 m/s 158 km/hr	50 m/s 179 km/hr	55 m/s 198 km/hr
Ultimate limit state loads (kPa)		+0.92 & -1.15	+1.23 & -1.53	+1.74 & -2.17	+2.24 & -2.80	+2.71 & -3.39
Adjustable and Fixed - horizontal & vertical	2900	2750	2500	2200	2000	1900

INSTALLATION OPTIONS**SPIRAL PIVOT: CALCULATE OPTIMUM FRAME OPENING SIZES**

Width: Check engineering limits
Height: Calculation example showing 17 blades

STEP 1

16 blades x 138	2208
1 blade at 150	150
17 blades	=2358

STEP 2

Blade cover	2358
+ top and bottom closing angles allow for 5mm + 5mm	10*
Total exact opening height	=2368

*This is inside measure - not outer frame size.

**KISS PIVOT: CALCULATE OPTIMUM FRAME OPENING SIZES**

Width: Check engineering limits
Height: Calculation example showing 17 blades

STEP 1

16 blades x 138	2208
1 blade at 150	150
17 blades	=2358

STEP 2

Blade cover	2358
+ top and bottom closing angles allow for 21mm + 21mm	42
Total exact opening height	=2400

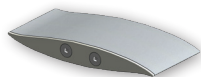
*This is inside measure - not outer frame size.

**END FIXED**

Louvres at any pitch
Louvres at any centre

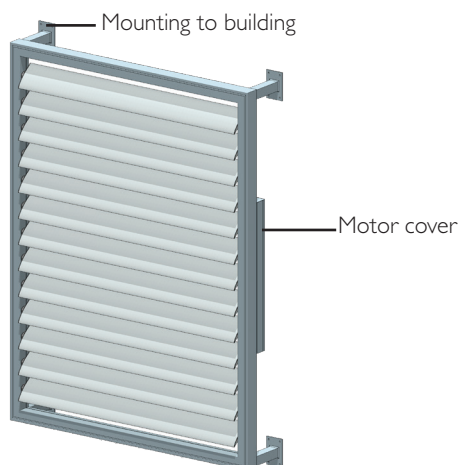
**BRACKET FIXED**

Louvres at any pitch
Louvres at any centre

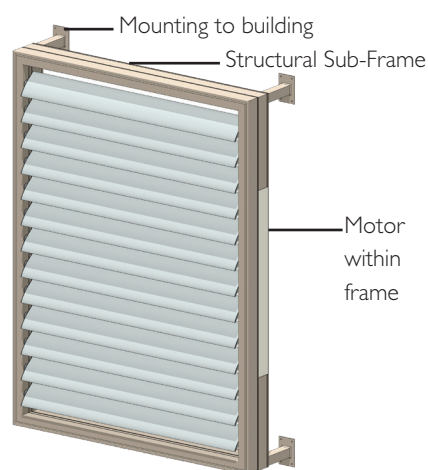


TECHNICAL DETAILS 150MM MIDI LOUVRE SPIRAL PIVOT

TYPICAL DETAIL 3D MODELS 150MM SPIRAL PIVOT MOTORISED LOUVRES - HORIZONTAL BLADES

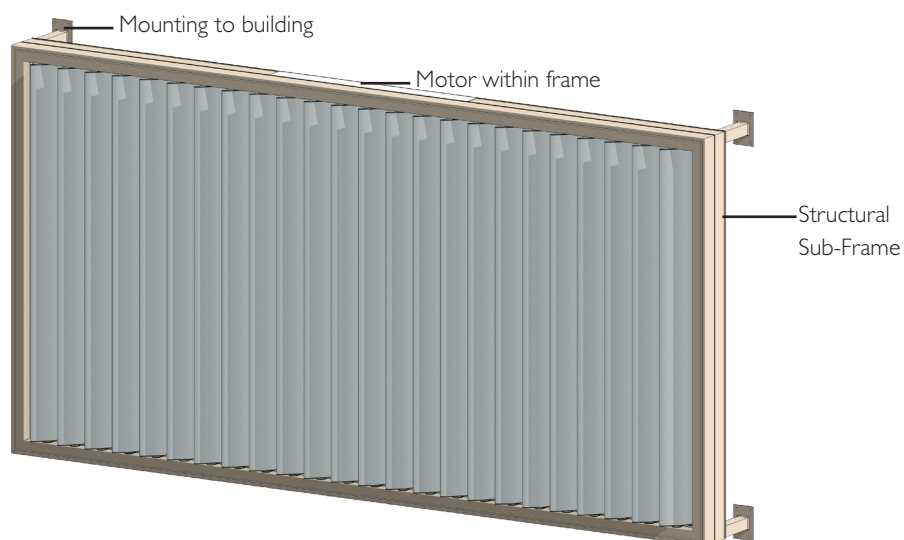


Elam Street Structural Frame
Vertical panel - horizontal blades



Super Elam Street Structural Frame with Sub-Frame
Vertical panel - horizontal blades

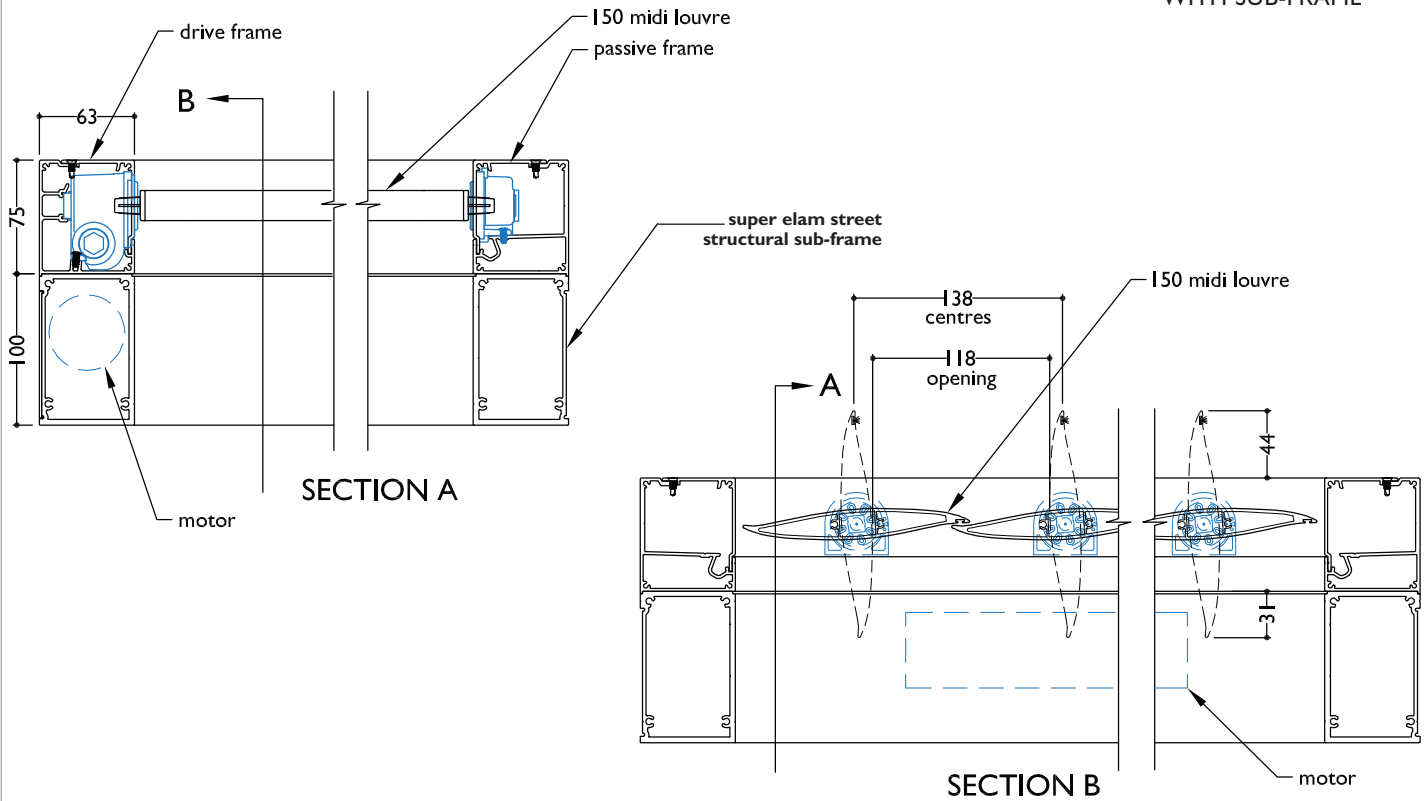
TYPICAL DETAIL 3D MODEL 150MM SPIRAL PIVOT MOTORISED LOUVRES - VERTICAL BLADES



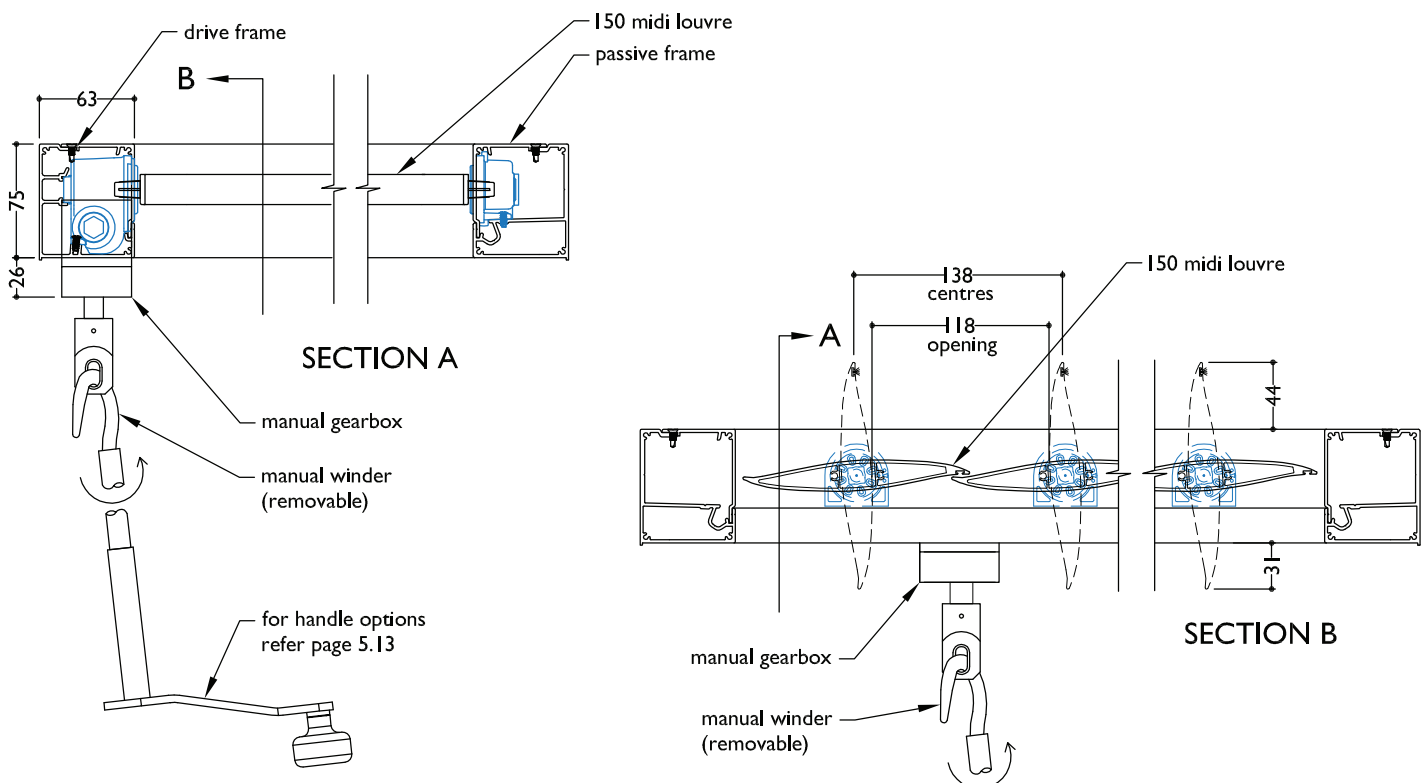
Super Elam Street Structural Frame with Sub-Frame
Vertical panel - vertical blades

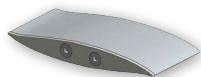
TYPICAL DETAIL : 150MM MIDI LOUVRE SPIRAL PIVOT

SECTION - MOTORISED 150MM MIDI LOUVRE SPIRAL PIVOT ON SUPER ELAM STREET STRUCTURAL FRAME WITH SUB-FRAME



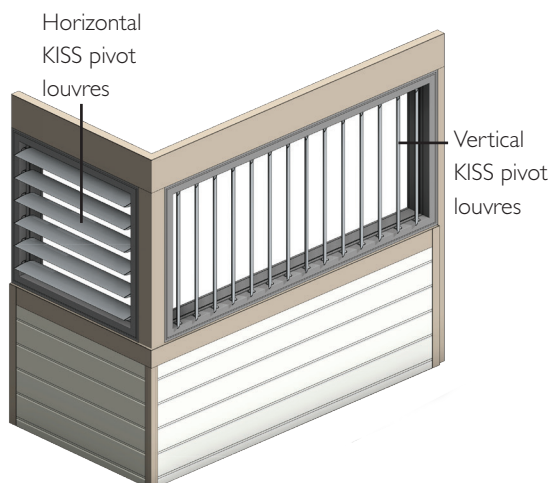
SECTION - MANUALLY OPERABLE 150MM MIDI LOUVRE SPIRAL PIVOT



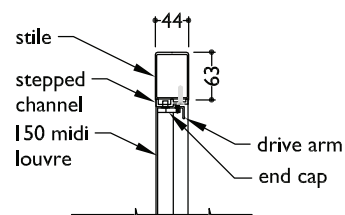


TECHNICAL DETAILS | 150MM MIDI LOUVRE KISS PIVOT

TYPICAL DETAIL 3D/2D MODELS | 150MM KISS PIVOT VERTICAL & HORIZONTAL BLADES



150mm KISS Pivot louvres

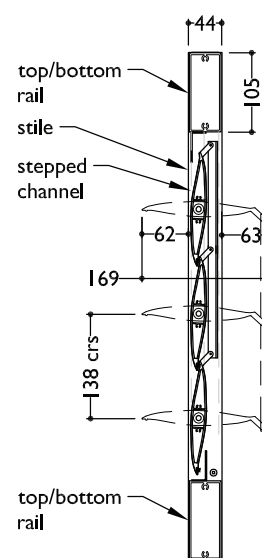


Plan: In door panel or frame

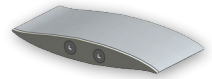
TYPICAL DETAIL 3D/2D MODELS | 150MM KISS PIVOT WITHIN BIFOLD DOOR



150mm KISS Pivot louvres

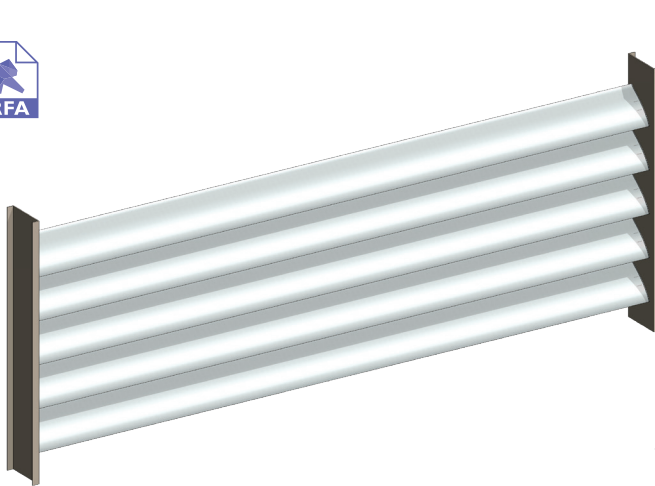


Section: In door panel

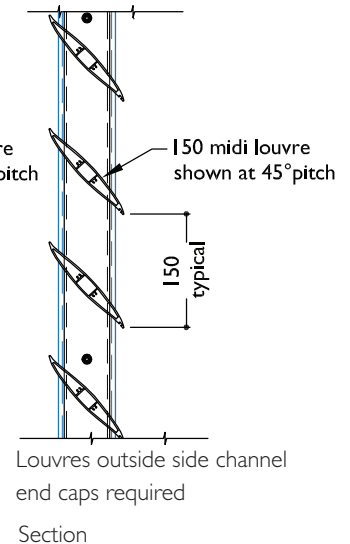
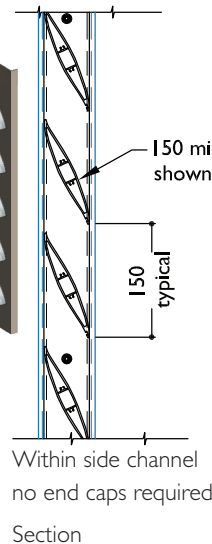


TECHNICAL DETAILS 150MM MIDI LOUVRE END FIXED

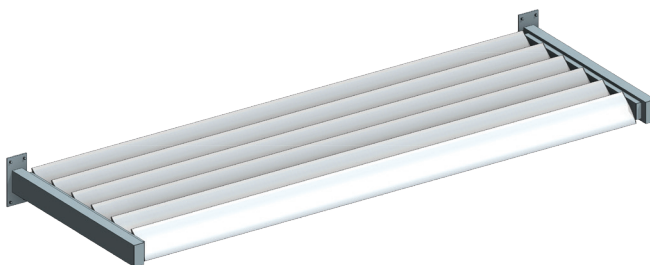
TYPICAL DETAIL 3D/2D MODELS 150MM END FIXED LOUVRES - VERTICAL BLADES



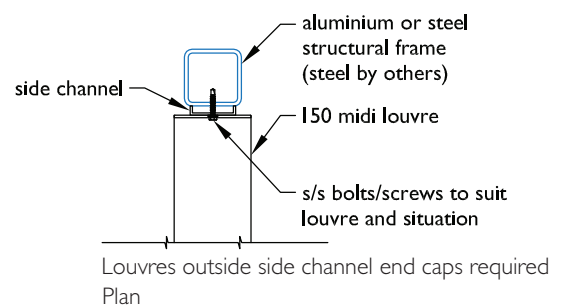
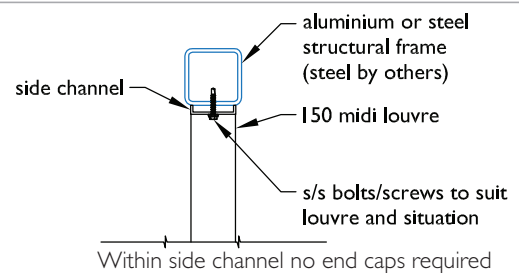
150mm end fixed louvres - vertical panel

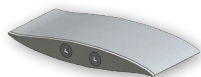


TYPICAL DETAIL 3D/2D MODEL 150MM END FIXED LOUVRES - OVERHEAD BLADES



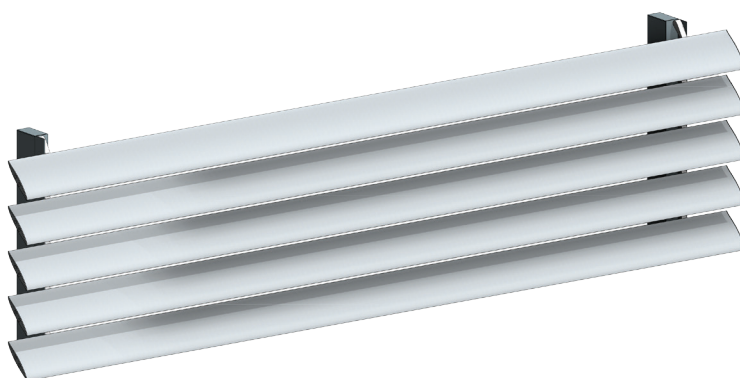
150mm end fixed louvres - overhead panels



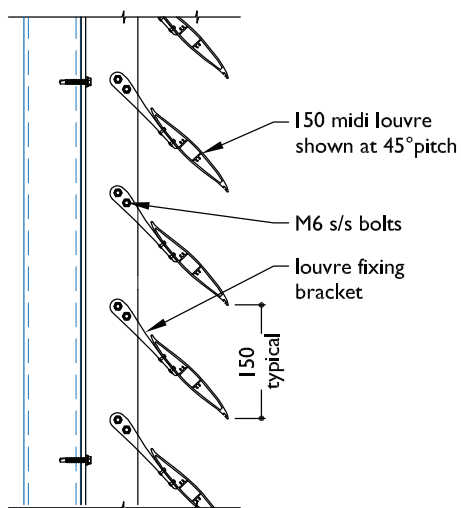


TECHNICAL DETAILS I 50MM MIDI LOUVRE BRACKET FIXED

TYPICAL DETAIL 3D/2D MODELS I 50MM BRACKET FIXED LOUVRE - VERTICAL PANEL

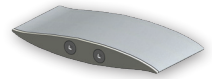


I 50mm bracket fixed louvres - vertical panel



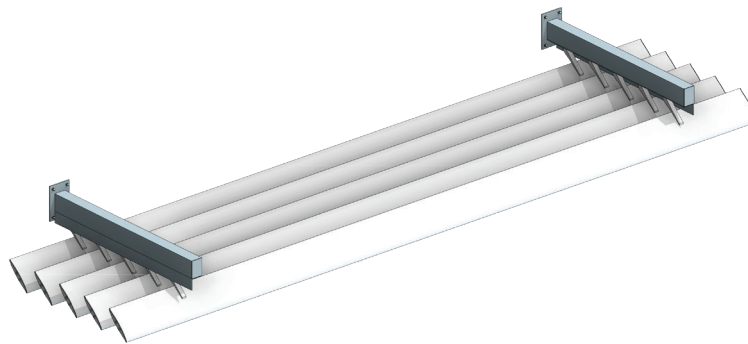
note: pitch (angle) and spacing of louvres can vary and are set at time of manufacturing

Section

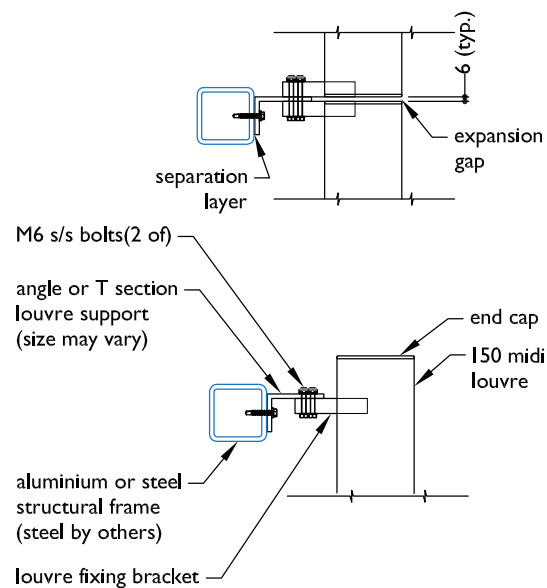


TECHNICAL DETAILS I 50MM MIDI LOUVRE BRACKET FIXED

TYPICAL DETAIL 3D/2D MODELS I 50MM BRACKET LOUVRE - OVERHEAD PANEL



I 50mm bracket fixed louvres - overhead panel



Plan