



PRODUCT OVERVIEW | 120MM FLUSH PANEL

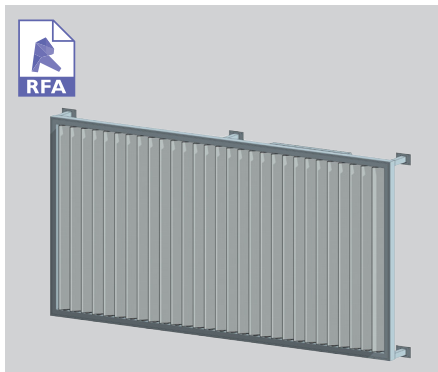


120MM FLUSH PANEL

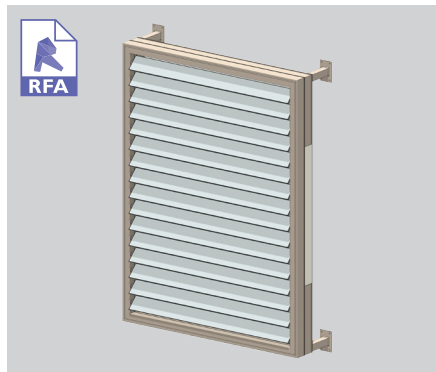
wall panel / sun louvre / balustrade

The 120mm and 200mm Louvreline Flush Panel louvre system provides for an extensive range of applications.

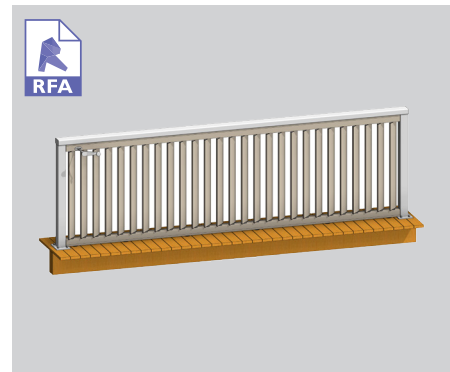
Rectangular Louvres are available as Spiral Pivot motorised or hand operable panels and provide a fully flush operable opening wall. Blades can be run vertically or horizontally with each blade closing on to a woolpile strip. The triple box section design allows for good spans both vertically and horizontally.



ELAM STREET FRAME - VERTICAL MOTORISED



SUPER ELAM STREET FRAME - HORIZONTAL



HAND OPERABLE BALUSTRADE

SURFACE COATINGS

A wide range of options are available.



ANODISED



WOOD FINISH



POWDERCOATED

OPERATING THIS SUN LOUVRE - THE CHOICE IS YOURS

Fixed options

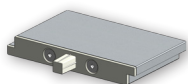


LOUVRETEC
GEARBOX

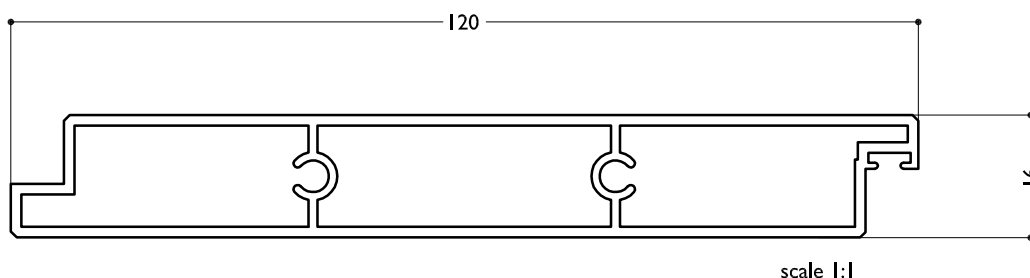


MOTORS AND SENSORS

SUN LOUVRES - RECTANGULAR SPECIFICATIONS



TECHNICAL DETAILS 120MM FLUSH PANEL



BLADE SPECIFICATIONS			
Blade cover - opening system	115 mm	Weight per lineal metre	0.86 kg/lm
Weight per square metre - opening system	8 kg/sqm	Actual blade width	120 mm
Blade Centres - opening system	115 mm		

SPANS AT A GLANCE NB Refer Engineering Section. Climate, terrain, shielding, location, type of structure contribute to determine spans.

WIND ZONE	INSIDE	LOW	MEDIUM	HIGH	VERY HIGH	EXTRA HIGH
Factored wind speed at building		32m/s 115km/hr	37m/s 133km/hr	44m/s 158km/hr	50m/s 179km/hr	55m/s 198km/hr
Ultimate limit state loads (kPa)		+0.92 & -1.15	+1.23 & -1.53	+1.74 & -2.17	+2.24 & -2.80	+2.71 & -3.39
Adjustable and Fixed Horizontal and Vertical	2600	2500	2300	2050	1900	1750

INSTALLATION OPTIONS



SPIRAL PIVOT SYSTEM: CALCULATE OPTIMUM FRAME OPENING SIZES

Width: Check engineering limits

Height: Calculation example showing 18 blades

STEP 1

17 blades x 115	1955
1 blade at 120	120
18 blades	=2075

STEP 2

Blade cover	2075
+ top and bottom closing angles allow for 5mm + 5mm	10
Total exact opening height	=2085

*This is inside measure - not outer frame size.



END FIXED

Louvres at any pitch
Louvres at any centre



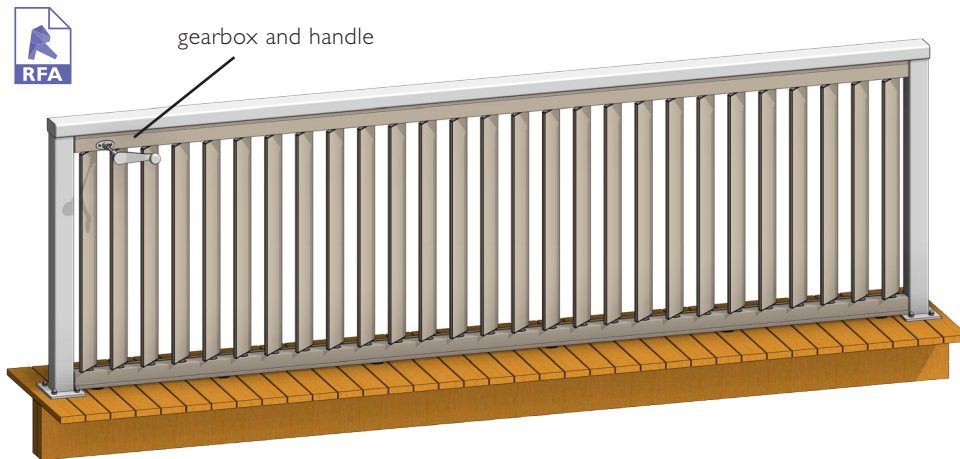
BRACKET FIXED

Louvres at any pitch
Louvres at any centre



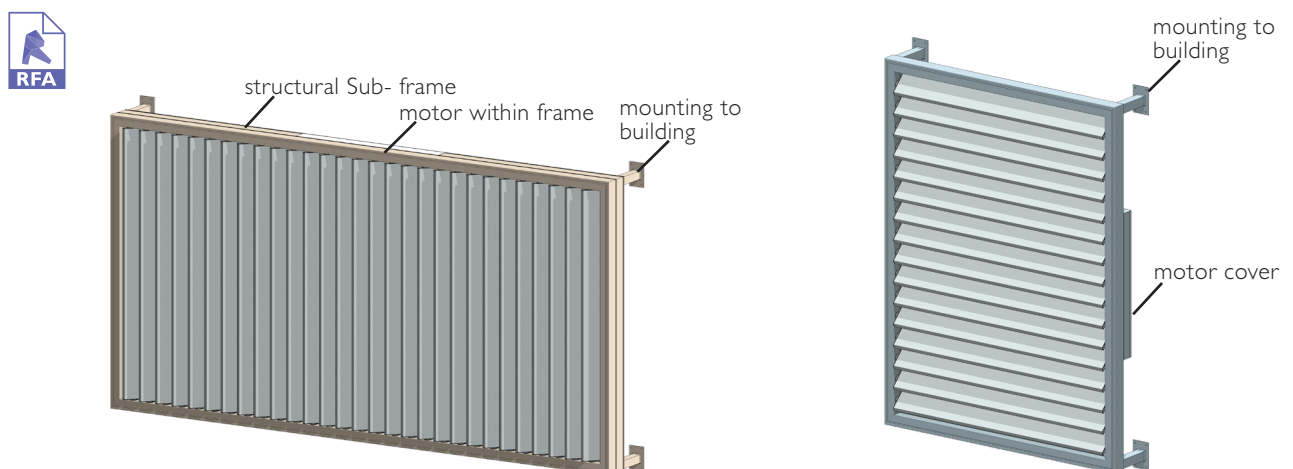
TECHNICAL DETAILS 120MM FLUSH PANEL SPIRAL PIVOT

TYPICAL DETAIL 3D MODELS 120MM FLUSH PANEL SPIRAL PIVOT HAND OPERABLE



Hand operable 125mm weatherboard balustrade.

TYPICAL DETAIL 3D MODELS 120MM FLUSH PANEL SPIRAL PIVOT HAND OPERABLE

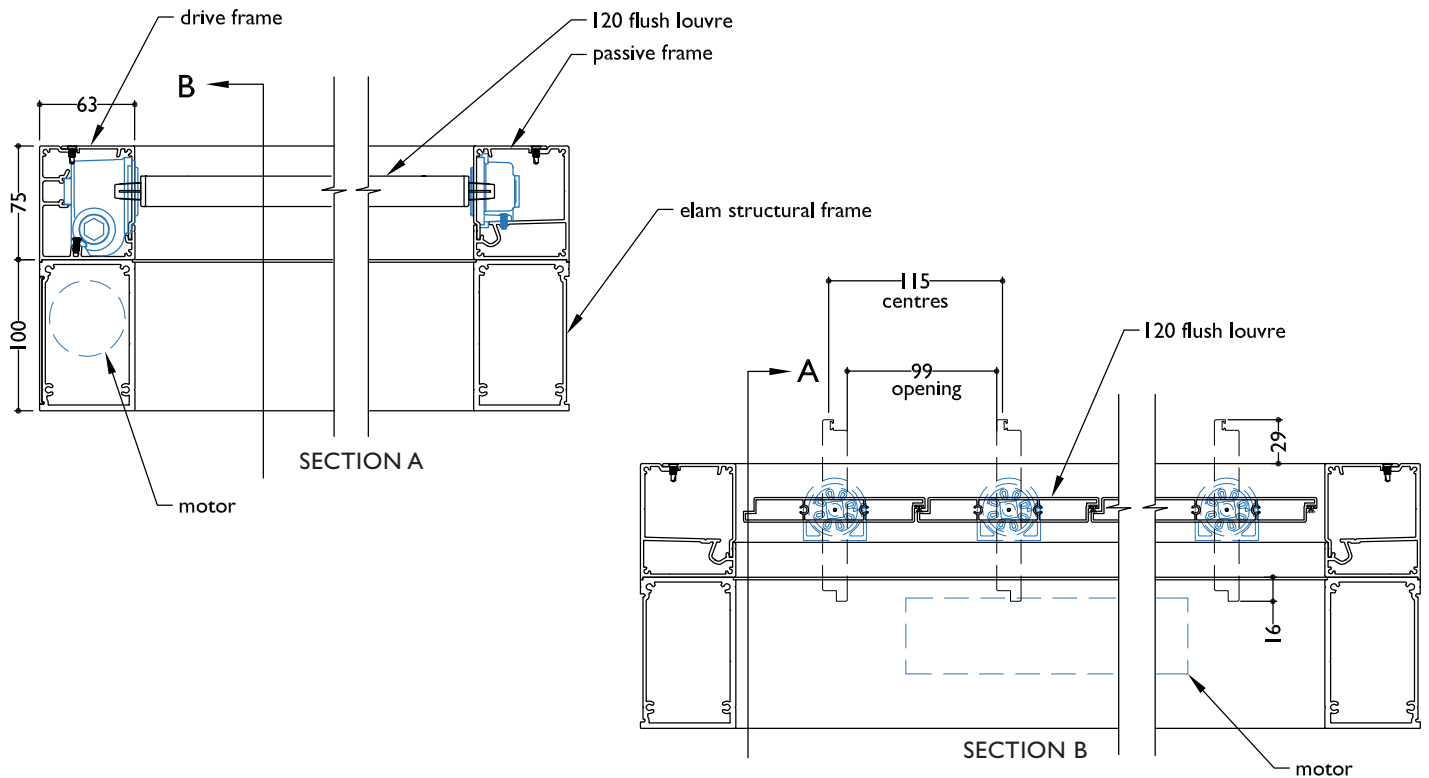


Super Elam Street Frame with sub-frame - vertical panel, vertical blades.

Elam Street vertical panel, horizontal blades.

TYPICAL DETAIL : 120MM SPIRAL PIVOT FLUSH PANEL

SECTION - MOTORISED 120 FLUSH LOUVRE SPIRAL PIVOT ON SUPER ELAM STRUCTURAL FRAME



SECTION - MANUALLY OPERABLE 120 FLUSH LOUVRE SPIRAL PIVOT

